

PRIMARY RECOVERY SHIP COVERS



Lesser used Apollo 11 Hand Cancel (HC) from the Primary Recovery Ship (PRS), USS Hornet, for the safe recovery of the crew. Mailed by a Band Member to his wife on the date of the recovery with a Navy Rubber Stamp Cachet.

For every manned spaceflight mission from Project Mercury (1961-1963) through the Apollo-Soyuz Test Project (ASTP) (1975), the United States chose to follow the path established by the French "Father of Science-Fiction", Jules Verne in his book, *From the Earth to the Moon* in which space ships, launched from Florida, were recovered at sea by U.S. Navy Warships.

This exhibit reflects chronologically cancelled covers for U.S. man-rated space capsules recoveries. This includes recoveries of both manned and unmanned capsules. It illustrates the Navy Rubber Stamped Cachets (NRSCs) applied by US Naval personnel (which makes them "Route Markings") for each mission. Also shown are special cachets, some of which make a huge value difference even with the same cancel due to the difficulty of acquisition of certain ones, identified with a red dot near an upper corner. Signatures on the covers, which astrophilatelists see as enhancements to the cachets, are shown throughout. The jargon of space cover collecting includes the various types of cachets: Beck, Goldey, Captain's, Crew, Recovery Team, Secondary Recovery Ships (SRS), Insurance, Wings, and "CINCPAC". CINCPAC was named by this collector who was the first to discover and document them. In most cases, the numbers of Beck Cachets used on covers has been documented and is reported herein. The colors used on Navy Rubber Stamped Cachets are also listed for each flight. There are several types of cancels for many missions which were researched by this collector for his 1992 *Primary Recovery Ship Handbook*, and who also first identified the hand cancels that varied from ship name-on-top to ship name-on-bottom as Types 1 and Types 2.

Early Project Mercury "Boilerplate" [full man-rated but unmanned capsules] recovery ship covers from 1959 and 1960 either do not exist or are in such small numbers that this collector has never seen them offered.

PRIMARY RECOVERY SHIP COVERS & MARKINGS EXHIBIT LAYOUT

The dates on the covers themselves eliminates a need for a "Timeline" at the top of each page. However the headings below are used throughout. Fakes are shown and identified as illustrations for astrophilatelic knowledge. Some unmanned flights tested capsules and their returns to Earth. Those that were recovered are also shown. Rare covers for the recovery of HAM the Chimp – Mercury Redstone 2 (MR-2) and for a Mercury-Atlas 4 (MA-4) Talking Robot are so rare that an example of each has not been seen by this collector in well over two decades.

I. PROJECT MERCURY

1. Manned Suborbital Flights (2 flights)
2. Manned Orbital flights (4 flights)

II. PROJECT GEMINI

1. Recovered Boilerplate (Unmanned Gemini Titan 2 [GT-2] Test Capsule) (1 flight)
2. Manned Gemini 3 through 12 manned missions (10 flights)

III. MANNED ORBITING LABORATORY (MOL) Unmanned (1 flight)

IV. PROJECT APOLLO

1. Unmanned Recovered Boilerplates (4 flights)
2. Manned Apollo-Saturn 7 through 17 (AS-7-17) (11 flights)

V. SKYLAB (SL)

1. Manned Missions

VI. Manned APOLLO-SOYUZ TEST PROJECT (ASTP) (1 flight)



Primary Recovery Ships were usually Aircraft Carriers, as was the USS Hornet above. Others were Landing Pad-Helicopter (LPH) ships. On a few occasions Secondary Recovery Ship (SRS) Destroyers were closest to splashdown and recovered crews and/or capsules.

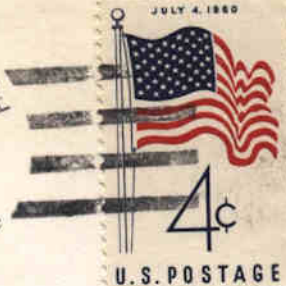
USS LAKE CHAMPLAIN, CVS-39
c/o FLEET POST OFFICE
NEW YORK, NEW YORK



USS LAKE CHAMPLAIN CVS-39
RECOVERY SHIP FOR THE FIRST
U. S. MANNED SPACE FLIGHT
5 MAY 1961

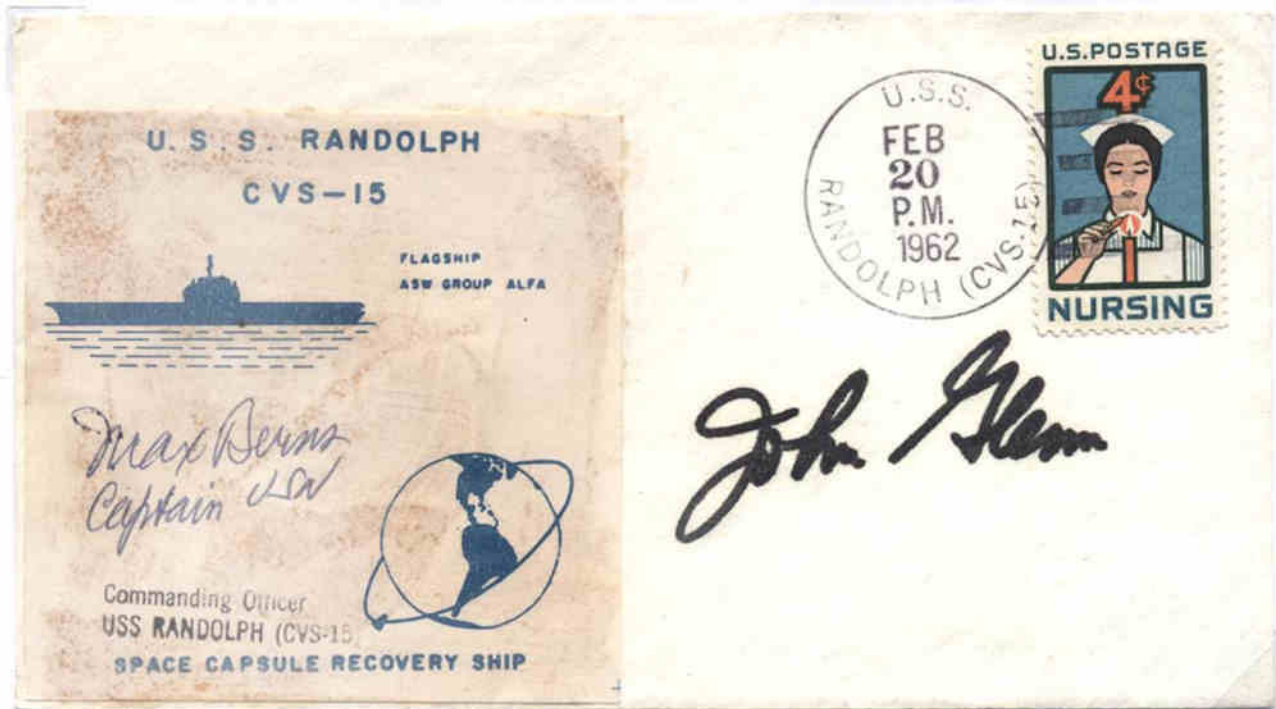
MR-3 (Mercury Redstone third rocket flight). *Alan Shepard*. Only 44 covers were cancelled aboard the USS Lake Champlain. *Less than 1/3 of those were covers were those with corner cards (printed return address area) that could be bought by the crew (Crew Covers). This is one of two varieties of Hand Cancels used. The other has "dots" after the U.S.S. Only correct dates with the Hand Cancels (HC) exist.*

MISSILE
FIRED FROM..
Cape
Canaveral



Carl Larson
3107 South Detroit
Tulsa, Oklahoma U.S.A.

MR-4. A second, and identical, 15 minute sub-orbital "hop" by *Virgil Ivan (Gus) Grissom*. The carrier, USS Randolph, recovered Grissom, but his capsule filled with water and sank. *Two cancel types were used. This is Type II (with no "dots") after the U.S.S. The cachet is a generic Rubber Stamp Cachet (RSC) designed by Carl Swanson, then with the Smithsonian art department. Only HCs exist.*



Mercury-Atlas 6 (MA-6) The sixth flight of a Mercury Atlas configuration with *John Glenn*. The first U.S. manned orbital mission was forced to return early due to perceived major problems with the heat shield. As such, the PRS, USS Randolph, was not the closest ship to the splashdown. Cachet label was printed aboard the ship at the behest of the Captain and applied with a glue that stained most recovery covers. This is known as a "Captain's Cover". Where they exist they are the more sought after covers. Only Hand Cancels (HC) exist.



MA-6 (cont'd). The destroyer, USS Noa, recovered Glenn and his capsule and Glenn was later flown to the USS Randolph. There were no Project Mercury stamps on board the NOA and this is one of the approximately 300 covers backdated for crew members.



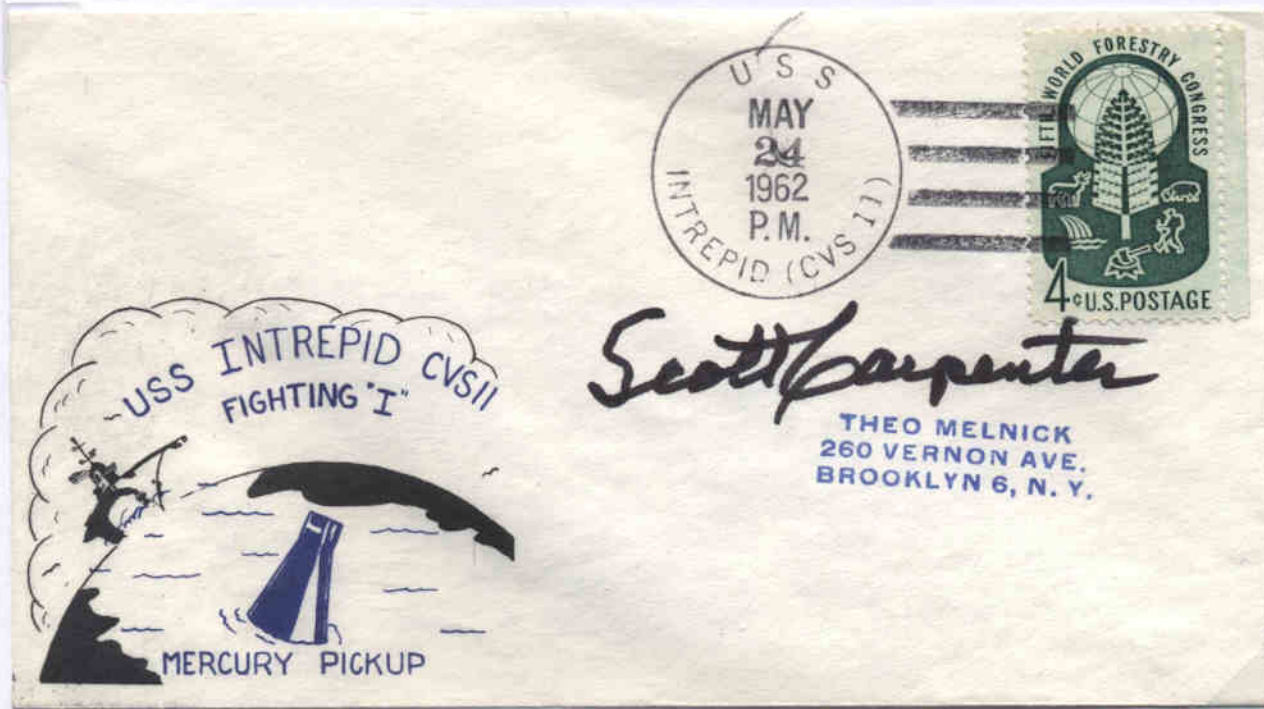
MA-6 (con'td). The USS Noa returned to port late on February 22nd and 1500 of these covers were stamped and sent out on February 23rd. Being the Day after the Post Office closed, these are legitimate "Return to Port" covers. (Printing freak on this Goldey cachet seems to show the capsule being lifted out of the sea by the Noa.)

**RISER
FAKED
COVER**



MA-6 (cont'd) Charles Riser, a legitimate Space Cover Servicer, decided that there was money to be made in applying fake cancels to create popular early space covers. He exclusively used U.S. Postal Stationery for his covers, sometimes using rubber stamped text or legitimate looking seals, like the above. Space Unit members proved in court that his covers were faked and he was convicted in a court of law.

PROJECT MERCURY-Orbital flights



MA-7 Scott Carpenter was to have landed near the USS Intrepid. However, he was supposed to fire a retro rocket to start his return and delayed the firing by a few seconds, landing 240 miles away. This is a Captain's Cover from the Intrepid, whose helicopters eventually retrieved him. Only HC exist.

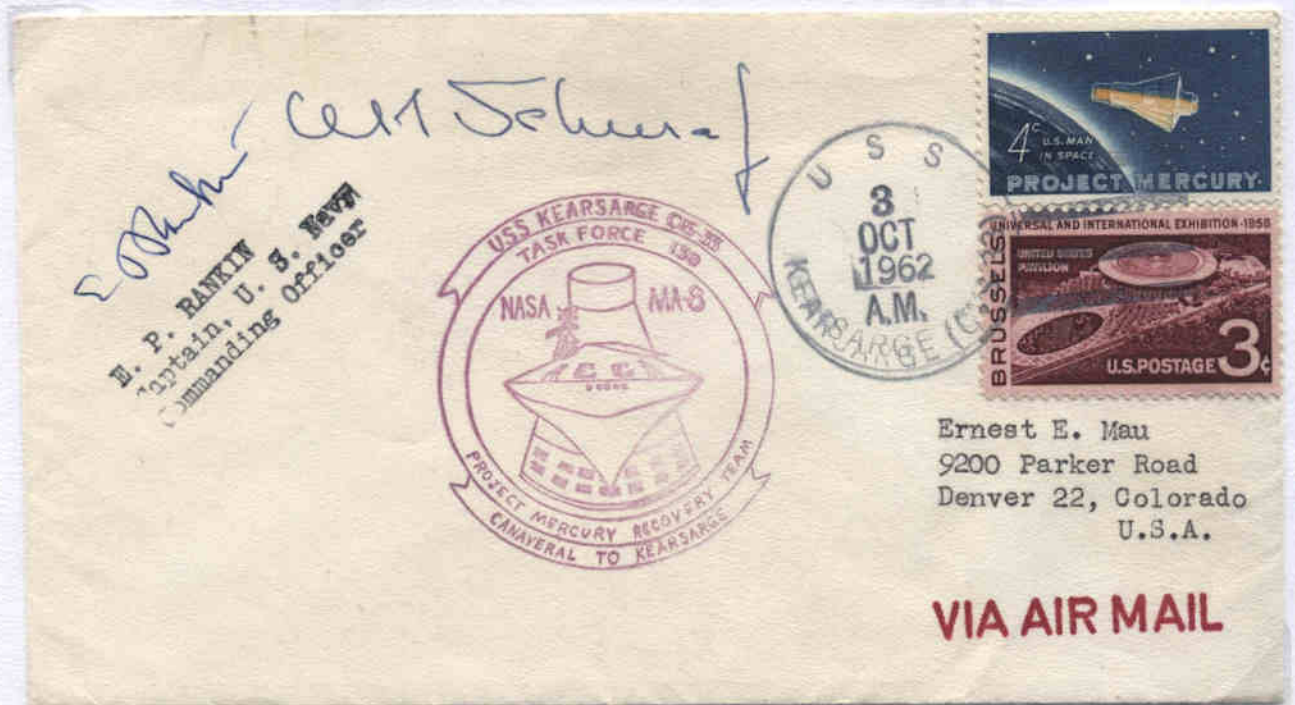


MA-7 (cont'd) The closest ship to Carpenter's splashdown was the Destroyer, USS John R Pierce. This ship recovered the capsule. The cachet is actually an offset from the back of another cover, applied by a USS John R. Pierce mail clerk. Only HCs exist.

PROJECT MERCURY-Orbital flights



MA-8 Wally Schirra flight. Both Schirra and his capsule were recovered by the USS Kearsarge. The Corner Card (the return address in the upper left hand corner, is not common.) The Machine Cancel (MC) was the predominantly used cancel for this flight. The Rubber Stamp Cachet (RSC) was prepared by or for the crew aboard the Kearsarge and added by US naval personnel making them routing marks.



MA-8 (cont'd.) This lesser used Hand Cancel was used on significantly fewer covers. It bears the corner card of the Ship's Captain and his signature. This is considered to be a Captain's Cover.

PROJECT MERCURY-Orbital flights



MA-9 Gordon Cooper flight. Cooper was the first American to stay in orbit for over 24 hours. *This was also the last Project Mercury flight because the 7th Mercury astronaut, Deke Slayton, was removed from active duty due to a medical problem. Again this MC was the most predominant and this is considered to be a Captain's Cover.*



MA-9 (cont'd) The seldom seen Hand Cancel for this mission. *This also bears the shipboard created cachet for this flight.*

PROJECT MERCURY-Orbital flights



MA-9 (cont'd.) Beck Cachet, the most popular of the commercial Recovery Ship cachets. *Morris Beck*, who had been creating ship covers for collectors of Naval History, created this first space cachet for the Cooper flight. At the bottom of each of the cachets he has added a B (for Beck) followed by a consecutive series of numbers. This is B323 with 279 made. He also created B317 for the USS Fletcher, a Secondary Recovery Ship (SRS) for this mission, but it too somehow received Kearsarge cancels. MC & HC exist.



MA-9 (cont'd.) A popular printed cachet of unknown origin, showing the flotilla and aircraft involved in the Mercury program recoveries. .

PROJECT GEMINI – Boilerplate Recovery



Gemini-Titan 2. (GT-2) First unmanned flight of this configuration for a two-manned capsule. *There were three different Beck numbers issued for this mission: B456, B461(384 created), & B463. Many, but not all, collectors search for all of the Beck numbers. Only Hand Cancels were used.*



GT-2 (cont'd) Cachet B463 had the lowest total made of 266.



PROJECT GEMINI *Boilerplate, cont'd*

GT-2 (cont'd.)
Morris Beck started producing 2 rubber stamps for each ship in each recovery task force, which he gave to the Navy at no cost. This cover has an AM cancel. The red cachet is the least seldom seen.

EUGENE WIECKOWSKI
4837 W. GUNNISON
CHICAGO, ILL. 60630

GT-2 (cont'd)
There is no record of the number of the "Navy Rubber-Stamp Cachets" (NRSC) applied, but often the postal clerks on board the ships would use several different. PM cancels tie to the recovery time.



VIA AIR MAIL

B. Ronson
1307 Nelson Av.
NYC, NY 10452

GT-2 (cont'd.)
Black is the third and last different color NRSC used for the GT-2 recovery.

PROJECT GEMINI
Boilerplate, cont'd

GT-2 (cont'd). All cancellations for this unmanned flight are less available than on other Gemini flights. But this Machine Cancelled (MC) cover is in the "very difficult to-find" category. The MC was employed as a favor to a few people on board the PRS, and all are seen on #10 business envelopes.

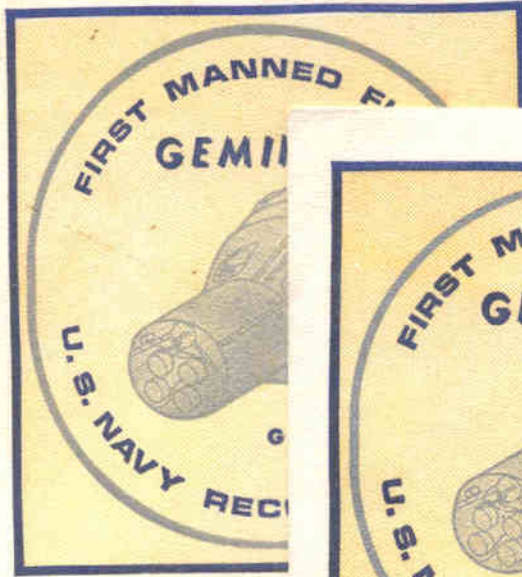


Mrs Floyd D. Benson
1417 North Orange Ave
Living Fall
North Dakota

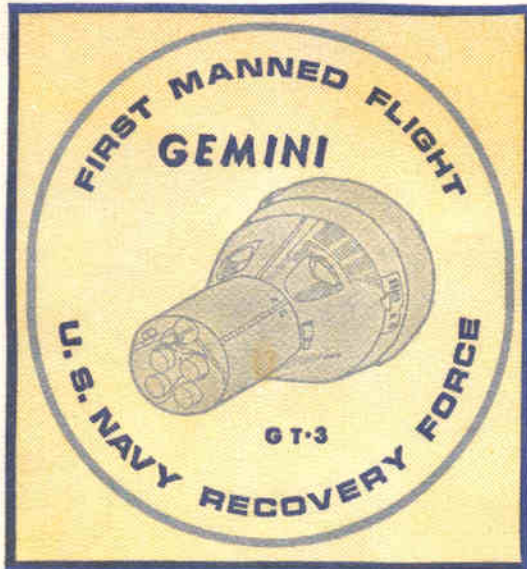


This exhibitor favors angled #10 mounting over spanning two pages due to the practical problems when others try to mount mine at other shows. Some handle them after putting up frames & have dirt on their hands.

PROJECT GEMINI
Manned Mission



B520



HOMER D. DOELL
District Intelligence Office
Fifth Naval District
U.S. Naval Base,
Norfolk, Virginia 23511

GT-3 with Gus Grissom and John Young, was the first of the manned Gemini-Titan flights. Grissom became the first person to go into space twice. The MC was the predominantly used cancel. Beck B515 and B520 were used. However, on this and two other Gemini flights, Beck supplied 25 "unnumbered" cachets for the use of the Captain. Above are both numbered and unnumbered Beck cachets.



Thomas J. Riordan
629 53rd Street
Brooklyn N.Y. 11220

GT-3 Much less seen is the HC for this ship. NRSCs were applied in both magenta, as shown, and Purple. This cover was cancelled for the Return to Port. There is no record of Captain's covers but crew covers on ship's stationery do exist..

PROJECT GEMINI
Manned flights.



Gemini Titan 4 (GT-4) Beck cachet *Jim McDivitt & Ed White*. B540 was the only Beck number assigned to this flight. This was White's only flight as he perished in a pad fire in 1967. Only the MC is known to exist.



GT-4 (cont'd.) An unusual cover is this GT-4 dated cancel on a GT-3 Beck cachet. B522 had been assigned to the Secondary Recovery Ship, USS Robert Owens, but was not used. The cover was sent to the USS Wasp with a print over showing GT-4 and lining out the GT-3. A pen was used to block the word "First" in the arc over the capsule.



GEMINI
GT-4



CHURCHILL



U.S. 5 CENTS

PROJECT
GEMINI
Manned flights.

USS WASP, RECOVERY SHIP

Latitude 27-48.3 N Longitude 74-23.2 W

1515 Q
7 JUNE 1965

James M. Smith
J. W. Long

COMMANDING OFFICER

GT-4 (cont'd) The Captain's Cover for this mission was printed aboard the ship.



GT-4 (cont'd). NRSCs for this mission were stamped in only black ink. This was sent to Europe at the domestic US rate at the time, *Per Universal Postal Union (UPU) rules, Article 26 (2), "mail postmarked aboard a ship in international waters, must use the postage of the ship's flag. Domestic rates apply and thus this cover bears the then-current domestic postage rate of the United States, even though sent to a foreign destination"*.



B561



**PROJECT
GEMINI**
Manned flights.



W. R. SKELLEY, JR.
1210 EARLE AVENUE
W. CHESAPEAKE, VA. 23506

GT-5 (Gordon Cooper and "Pete" Conrad). B561 was the only Beck number employed for this recovery. MC were, by far, the most used of the cancellations. An unnumbered Beck Cachet, one of 25, is shown as well.



GT-5 (cont'd) The vast majority of NRSCs used were Magenta. A lesser quantity is known to exist in Black as well.

**PROJECT
GEMINI**
Manned flights.



B543



J. C. Hobbs
2300 Magnolia Drive, Brandywood
Wilmington, Delaware 19803 U.S.A.

GT-5 (cont'd) Beck #B543 had been assigned to the Gemini 4 Secondary Recovery Ship, USS Hawkins. However a few covers of the 408 covers were forwarded to the USS Lake Champlain and cancelled aboard that PRS for Gemini 5. The exact quantity cancelled on the PRS is unknown.

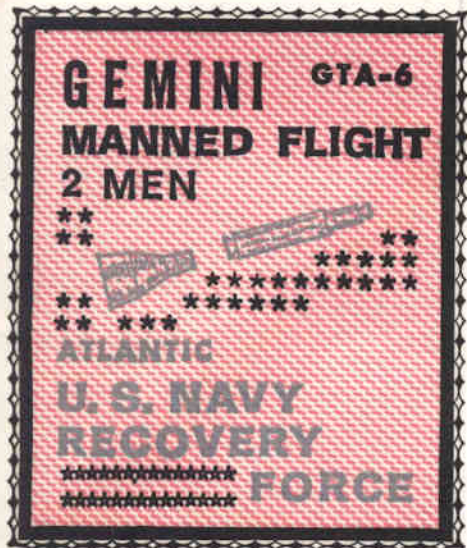


F. S. GERBER
680 FT. WASHINGTON AVE.
NEW YORK, N. Y. 10010

GT-5 (cont'd) The lesser seen Black NRSC on both a normally used MC and a seldom found HC appears above. The top is at the then domestic rate while the one below is at the prevailing Air Mail rate.

**PROJECT
GEMINI**
Manned flights.

GT-6 cover
cancelled at Cape
Canaveral for
launch and then
flown to the USS
Wasp for a
difficult to find
HC.



B584

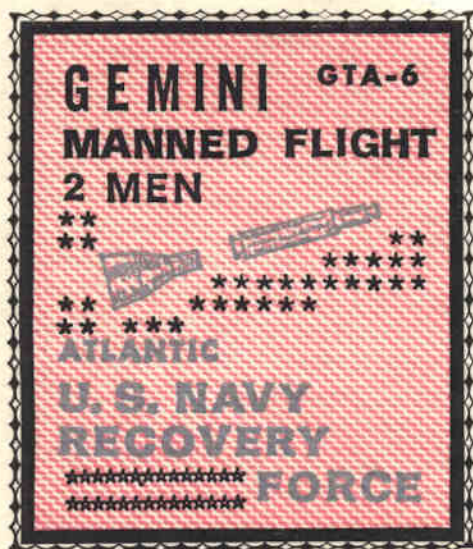


R. CLIFTON CAMPBELL
3919 Parkman Drive
COLUMBIA, S. C.

29206

GT-6 (Wally
Schirra & Tom
Stafford). The
Gemini Titan
(GT)capsule was
to have docked
with an Agena
rocket body in
space creating a
GTA. The cachet
shows the Gemini
craft approaching
an Agena.

The Agena failed to
orbit and the origin-
al GTA-6 launch
was scrubbed. NASA
launched GT-7 1st &
then the GT-6 (not
GTA-6) launched to
dock with it. Beck
B584 (533 created)
was used. An un-
numbered Beck
cachet (qty. 25 is
shown as well. A
revised GT-6 Beck
cachet was not
created



W. G. COTE
616 Graydon Ave.,
Norfolk, Va. 39553



**PROJECT
GEMINI**
Manned Flight

Thomas P. Stafford

Richard S. ...
1001 EMBROID STAGE
BESPEAKING, N.Y. 11411, N.Y.

GT-6 (cont'd) A Black NRSC, created for the unmanned GT-2 mission was used for this flight. The Tom Stafford "signature" is an "autopen" machine applied autograph. The 4c stamp was a penny short of the then current domestic letter rate and it was not valid at the time of the GT-2 flight either.



J. K. DONOGHUE
11111 FOSTHILL AVE.
FOLDS, N.Y. 11412

GT-6 (cont'd) Bubble stamp cachets were the ship's cachet, made on board the PRS. One bears the normal MC with an AM time slug and the other, the far lesser used HC with a proper PM time slug.

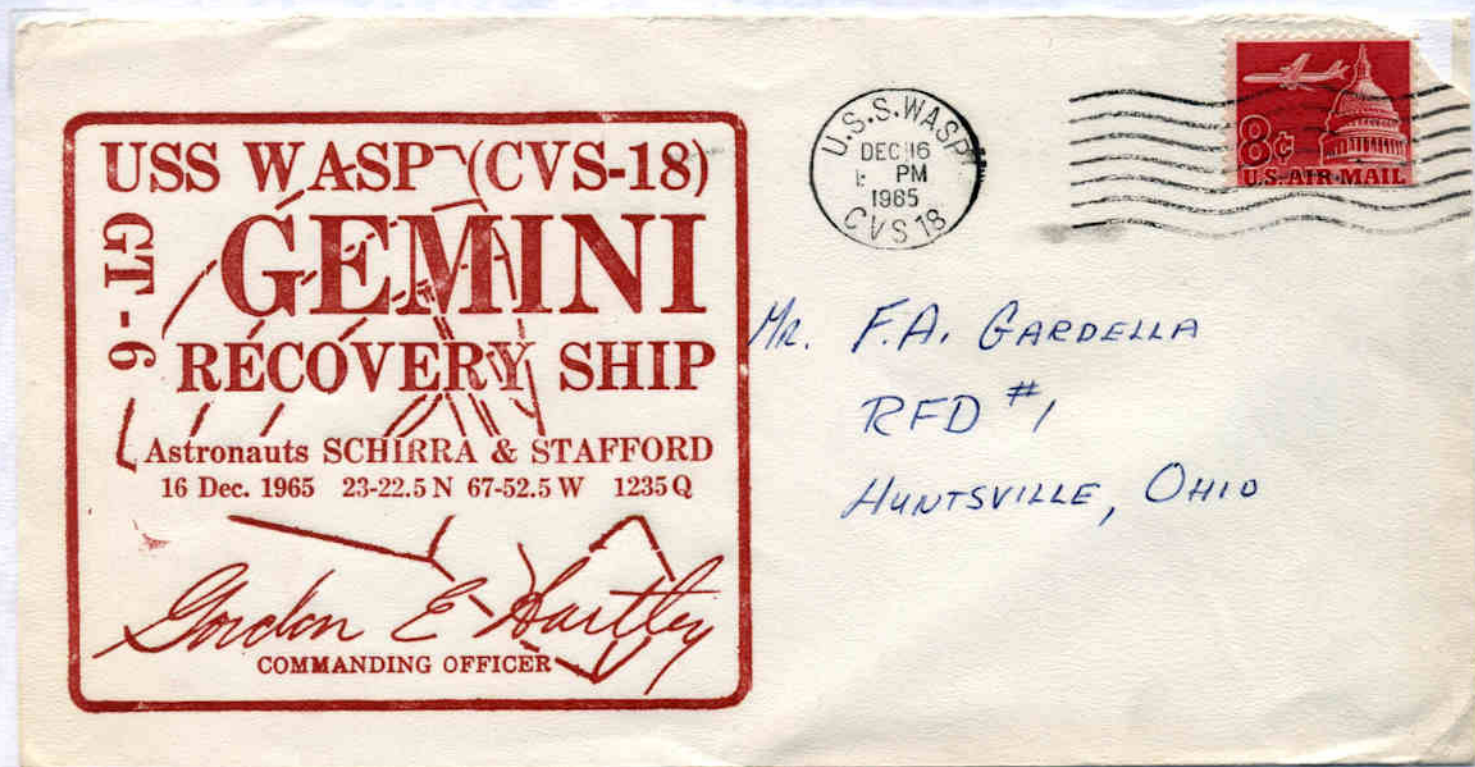


**PROJECT
GEMINI**
Manned flights.

GT-6 (cont'd) Beck
supplied a 2nd set of
two rubber stamps t
ships following the
original GTA-6
scrubbed mission.
Above is the
original GTA-6



cachet with the Gemini and Agena pictured. Below is the GT-6 cachet showing the GT-6 and GT-7
capsules flying in close formation. The date slug on the lower cover is inverted.



Mr. F.A. GARDELLA
RFD #1
HUNTSVILLE, OHIO

GT-6 Captain's Cover printed on board the USS Wasp.



**PROJECT
GEMINI**
Manned flights.



A. N. BLUM
8008 Walters Drive
Norfolk, Va. 23518

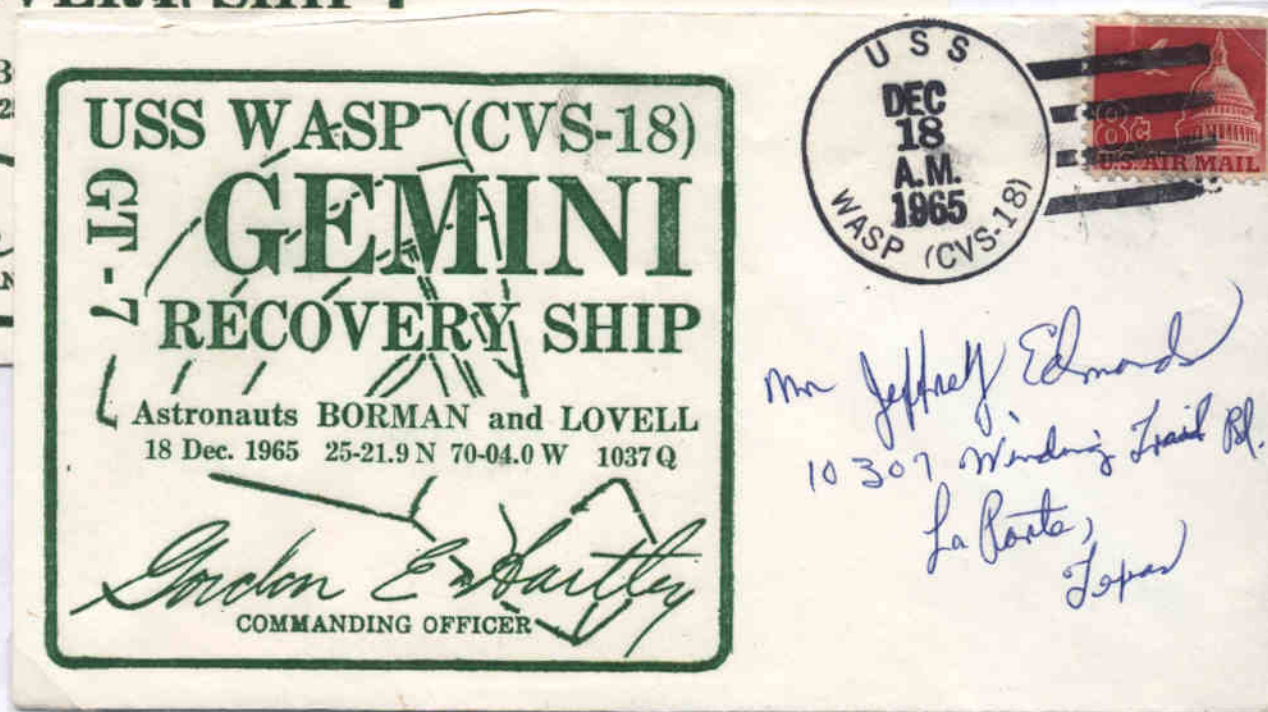
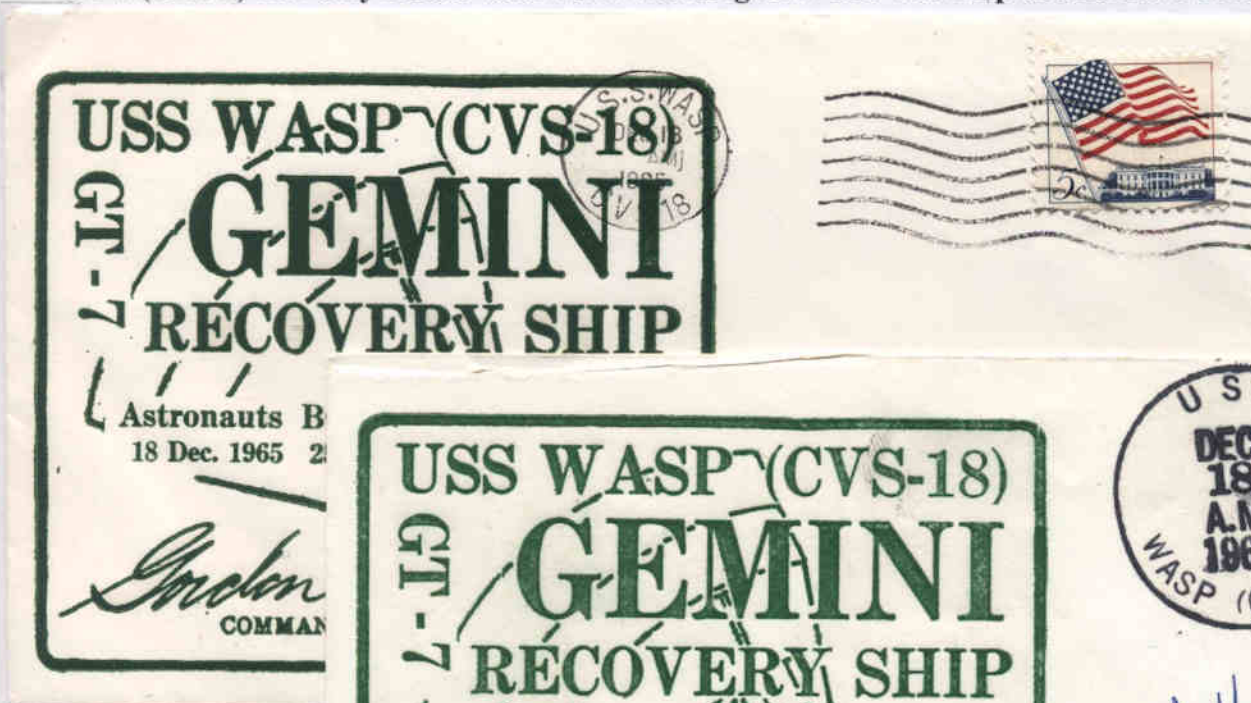
B605

GT-7 (James Lovell & Frank Borman) was launched before GT-6 but recovered two day later. This was the only time that Beck had 3 different colored cachet for a PRS. B603 (Dark Blue); B608 (Process Blue) and B607 (Plum). B605 (Golden Yellow was created for the SRS USS Waldron and is very uncommon.)



**PROJECT
GEMINI**
Manned flights.

GT-7 (cont'd) The only NRSC color used was magenta. The 4c stamp should have been 5c.



GT-7 (cont'd) Two days after the Wasp picked up the GT-6 crew, it brought the GT -7 crew aboard. These two Captain's covers in different shades of green ink bear both the MC and the lesser used HC.

PROJECT GEMINI
Manned flights.



GTA-8 (Neil Armstrong & Dave Scott). The USS Boxer was the designated recovery ship in the Atlantic and three Beck cachet numbers were released to this ship: B634, B637 and B638. The crew was to dock with an Agena target.



GTA-8 (cont'd). Magenta and Purple were the two colors of ink used on this ship. As if expecting the impending situation, the NRSC reads "Pacific Fleet" rather than "Atlantic Fleet" as appears on the Beck cachet. Once the GTA-8 capsule and the Agena docked, the two craft suddenly started spinning at one revolution per second. Armstrong barely saved their lives by pushing a switch and then breaking away from the Agena. NASA was concerned that something might have shifted and ordered an immediate return to Earth.

PROJECT GEMINI
Manned flights.



GTA-8 (cont'd) A printed Red Cachet was found later but it bore the return address of cachet maker, Harry Gordon, who may have applied his cachet after covers were returned to him. Most curious, and unanswered, is the origin of the Silver and the Gold thermographed covers above with HCs that have not shown up on any other covers. *(Discovered and written up by this collector).*



**PROJECT
GEMINI**
Manned flights.

GTA-8 (cont'd)
Made an emergency
landing in the
Pacific where it was
recovered by a US
Destroyer, the
Leonard F. Mason.
Fewer covers were
sent to SRSs and
these became more
difficult to obtain.
The Beck B630 was
the only number on
the Mason.



R. CLIFTON CAMPBELL
3919 Parkman Drive
COLUMBIA, S. C. 29206

B630

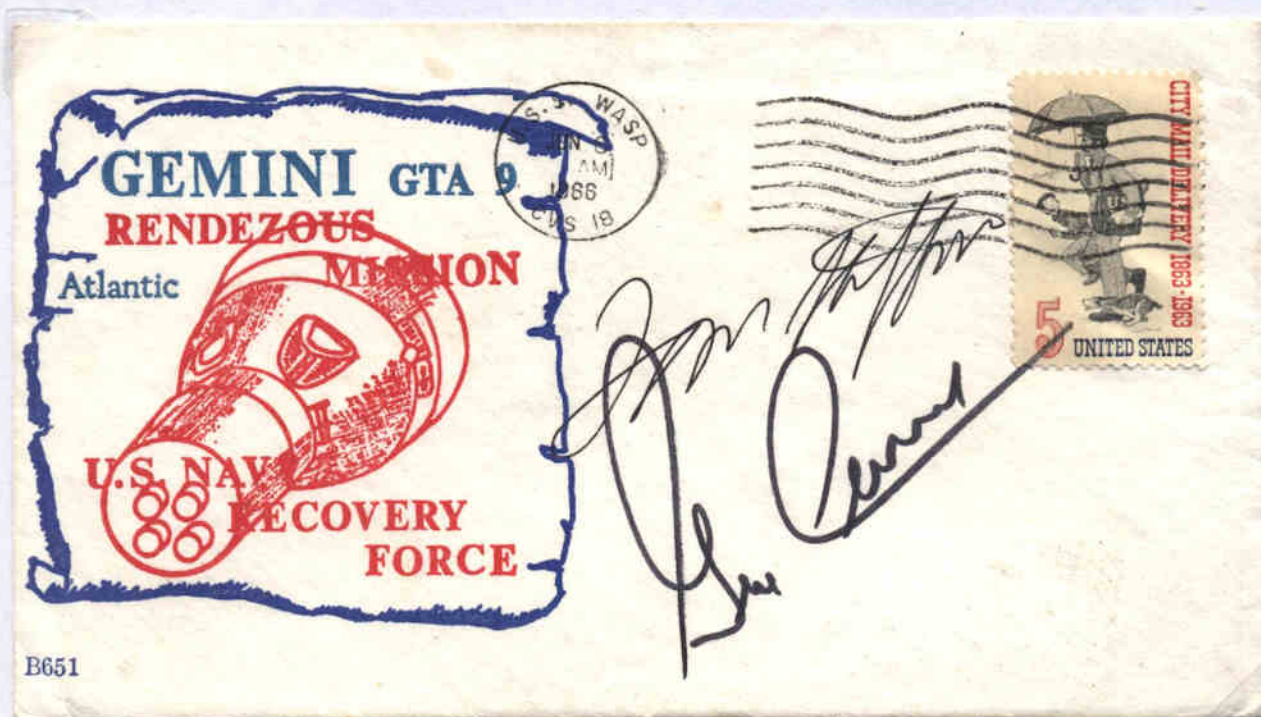
GEMINI-8 RECOVERY



GEMINI-8 Astronaut NEIL A. ARMSTRONG
and DAVID R. SCOTT landed after 7 orbits at
10:23 P.M. EST. Recovered by U.S.S. MASON
1:28 A.M. EST, March 17, 1966 in West Pacific
500 miles East of Okinawa.

Seldom seen "return to port" dated cover for the USS Leonard F. Mason.

PROJECT GEMINI
Manned flights.

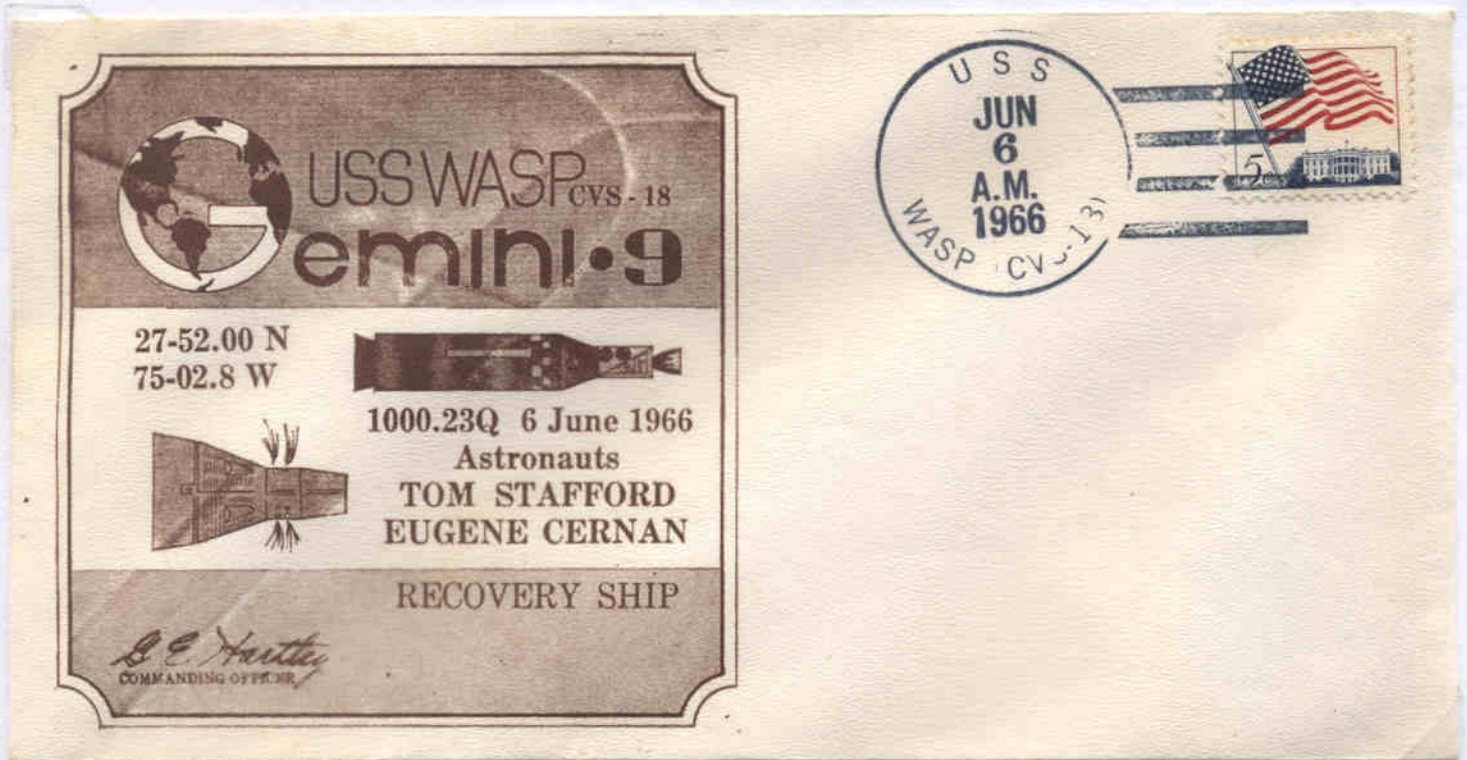


GTA-9 (Gene Cernan & Tom Stafford) Beck B651 and B657 were assigned to the USS Wasp. B656, assigned to the USS Chikaskia is also reported to have been postmarked aboard the Wasp, but this collector has never seen one. MC were somewhat more frequently used than HC for this flight. Note that the cachet has a spelling error in the word, "Rendezvous".



GTA-9 (cont'd) The B657 Beck cachet with the elusive Hand Cancel.

PROJECT GEMINI
Manned flights.



GTA-9 (cont'd) Captain's Cover with a HC for this mission. *This same cover, usually with 3c stamps or no stamps at all, is thought to be backdated.*



GTA-9 NRSC applied over a standard envelope sold aboard US Navy Aircraft Carriers. "Rendezvous" is also spelled wrong on these rubber stamped cachets.

PROJECT GEMINI
Manned flights.



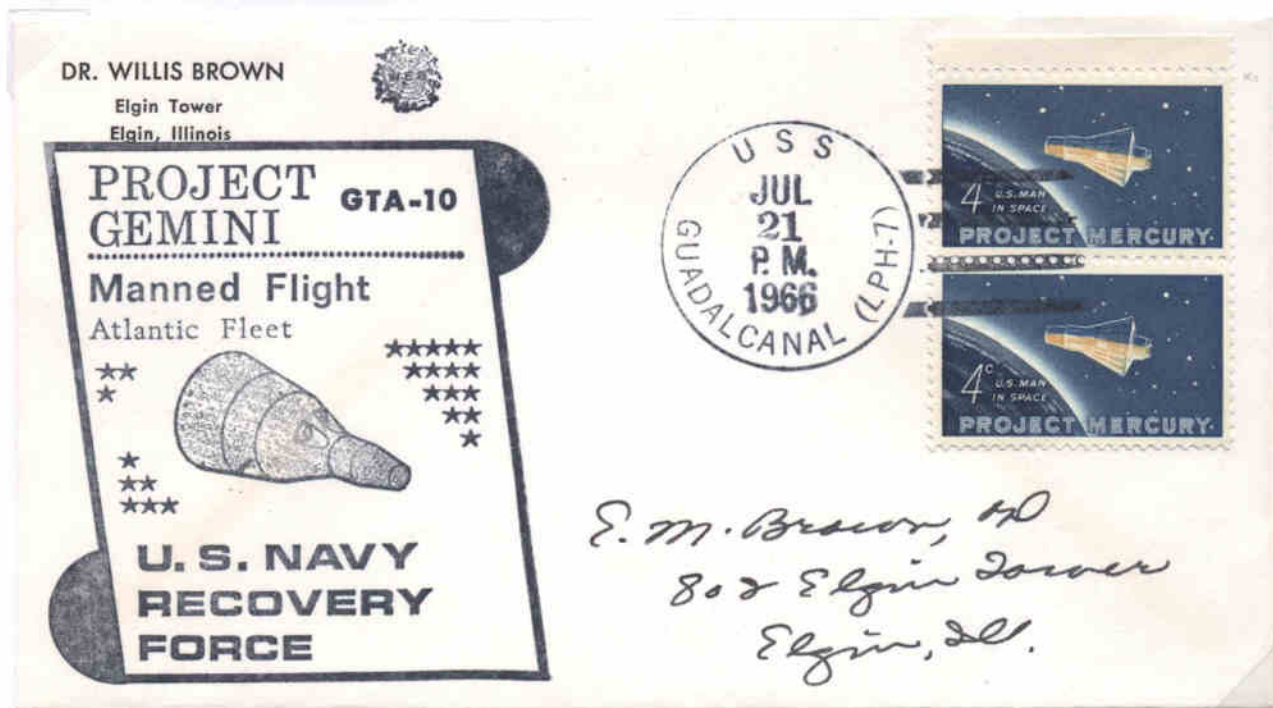
GTA-10 (John Young and Michael Collins). Two Beck numbered cachets exist. B667 and B672. Only HCs are known to exist for this mission.



GTA-10 The NRSC is usually found in magenta but some black cachets exist as well.

PROJECT GEMINI
Manned flights.

SUSPECT



GTA-10 (cont'd) Covers with a "Dr. Willis Brown" corner card have to be looked at carefully. In this case, the only NRSCs in black appear only on his stationery. In Apollo 13, the only PRS cancels without killer bars are from him. This collector identified both as "Suspect".



GTA-10 (cont'd) This is a shipboard prepared RSC, prepared by US Navy personnel. In the cancel, note that the last "6" in the year slug is over the space between the "A" and the "L" in Guadalcanal. The suspect cancel at the top of this page has that same "6" ending between the "N" and the "A". Ships usually had two hand cancellers. A variety on the prior page has the last "6" to the right of the "L". Thus far, this collector has not found another like the suspect cancel.

PROJECT GEMINI
Manned flights.



B683



Hugh M. Blackard
P. O. Box 118
Crockett, Calif. 94525

NOTE: Many, if not most, USS Guam cancels are poor as pointed out in the Manual of Philatelic Judging (MOJ) GTA-11 (Richard Gordon & Charles Conrad) There were five different Beck numbers used for the USS Guam, a Landing Pad Helicopter (LPH) ship. (These were B683 through B687). B683 had the fewest made at 487. Only, usually poor, HC were used.



GTA-11 (cont'd) The majority of NRSCs were applied in magenta. Black were less common and Blue are seldom seen.



**PROJECT
GEMINI**
Manned flights.

GTA-11 Black



GTA-11 Magenta

weber
2424 N. NORMANDY
CHGO. ILL
60638



VIA AIR MAIL

**GTA-11
Orbit Cachet**
These cachets are
far less in favor
by collectors.
Either collectors
associated "Orbit"
with forger Charles
Riser or just didn't
like them.

PROJECT GEMINI
Manned flights.

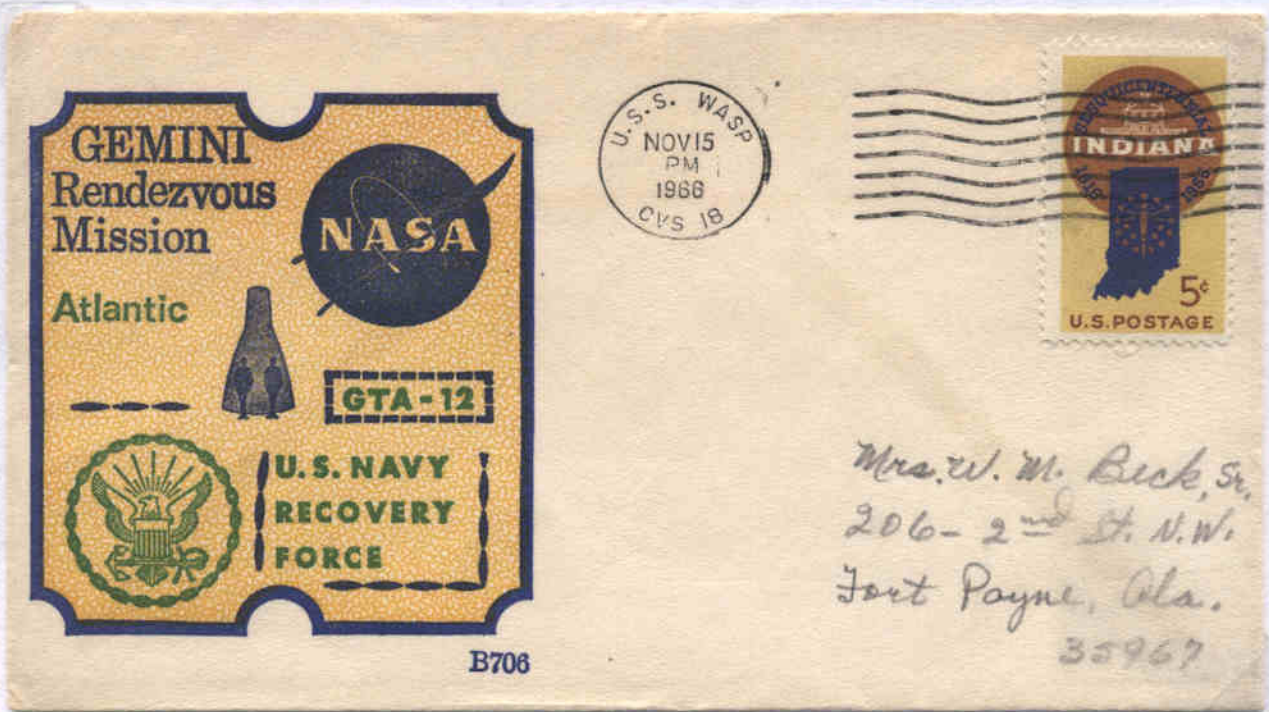
GTA-11 (cont'd) Printed
Captain's Cover with
Printed signatures.

Richard S. Gordon
Charles Conrad

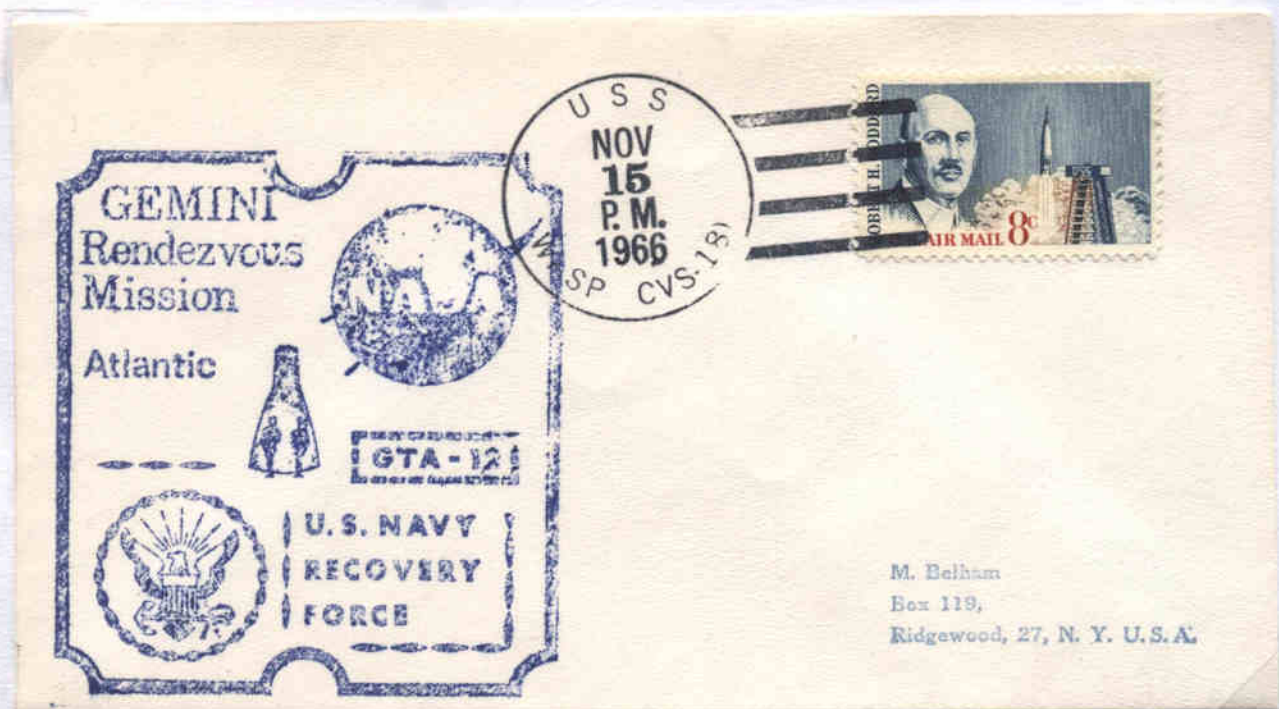


GT-11 COMPUTER LANDS
CONRAD & GORDON NEAR
CARRIER GUAM-15 SEPT. 1966

PROJECT GEMINI
Manned flights.



GTA-12 (James Lovell & Edwin (Buzz) Aldrin) There were six Beck cachets used. Only MC were applied to B706, B707, B709 and B711. Only HC were applied to B708, and both MC and HC can be found on B710.



GTA-12 (cont'd) NRSCs were primarily in magenta with black in fewer numbers and blue being seldom seen. Likewise, the HC is seen far less often than the MC.

PROJECT GEMINI
Manned flights.



GTA-12 (cont'd). **PROOF** Captain's Cover. Note that the crew names are typed in and the date is a rubber stamp. The only other example previously seen of this Proof was in an exhibit of Dr. R. Ramkissoom.



POSSIBLY SUSPECT

GTA-12 (cont'd) This is the printed Captain's Cover for this mission. The use of a 3c stamp with the additional 2c stamp added makes this suspicious as backdated Captain's covers bearing only 3c stamps have been found.

PROJECT GEMINI
Manned Flights



BACKDATED COVER

GTA-12 (cont'd) Captains Cover without a postage stamp is believed to be backdated. It was reported in the "Astrophile" that a stash of unused Captain's Covers were found in later years with or without 3c stamps. Note the position of the "1" in "1966" over the "P" of Wasp, compared to the positioning on the prior two covers.

FAKE

GEMINI 12
U. S. NAVY
RECOVERY
FORCE
LAST GEMINI
PICK - UP



GTA-12 (cont'd). Blocks of mint stamps have been seen with this faked double-ringed hub of this cancel. A prisoner in a prison created the fake cancel and applied it to both stamps alone as well as to covers bearing his own designed cachet as shown here.

PROJECT GEMINI
Manned flights.

GTA-12 (cont'd) An unusual find is this NASA Penalty Envelope with the PRS Hand Cancel and the NRSC in black.

Suspect covers do not have the NRSC.



PROJECT GEMINI
Manned flights.

GTA-11 CACHETS CANCELED FOR THE GTA-12 MISSION



GTA-12 (cont'd) This GTA-11 Beck cachet, B684, was used for the GTA-12 recovery. GTA11 Beck cachets B685 and B687 have all been found this way. Each of those cachets was originally assigned to the USS Guam, the PRS for GTA-11.



GTA-12 (cont'd) The GTA-11 NRSC has also been found with the GTA-12 cancel, in both: Magenta and Black.

PROJECT GEMINI
Manned Flights &
MANNED
ORBITING
LABORATORY
MOL
Cancelled Manned
Spying Program

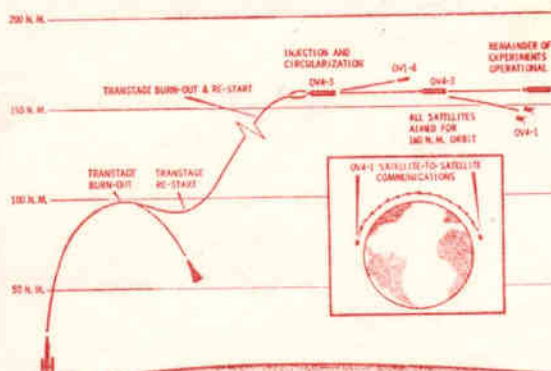


CHESTER GRIEWAHN
 2424 N. Normandy Ave.
 Chicago, Illinois 60635

GTA-12 (cont'd). This is an elusive black NRSC with a Hand Cancellation.

PROJECT MOL AIR FORCE

- Secret Military Man-In-Space Program
- Test, Manned Orbiting Lab Orbited
- Gemini Titan 2 Spacecraft Re-Flown w/Built In Heat Shield Hatch
- 4 Satellites Orbited w/Titan 3C



U. S. S. LASALLE RETURNS GT-2
 CAPSULE TO C. KENNEDY NOV. 15, 1966

MOL Unmanned flight MOL was a cover name for a spy-in-the-sky program. It was cancelled following this only flight and recovery. This cover was canceled for the return to port of the USS La Salle following the recovery of the MOL unmanned capsule, which had previously been used for the GT-2 unmanned boilerplate test. *Because earlier Orbit cachets had been used with 5c flag stamps that were phosphorescent tagged on 25 August 1966, leading to a conviction of the forger, this was suspect, but this flag stamp is untagged and the cancel is assumed to be legitimate.*

PROJECT APOLLO
Recovered Boilerplates.



Apollo-Saturn-201 (AS-201) (unmanned), was the first test flight of the smaller Saturn 1 rocket which could be used for Earth Orbit but not for voyages to the moon. The 01 of 201 stood for the rocket. Only Beck B622 was utilized. Because these test flights were unmanned, fewer covers exist for this series. Originally co-titled as "Apollo 1" that was dropped when the families of the Apollo fire that killed Grissom, White and Chaffee requested that their capsule be redesignated as Apollo 1.

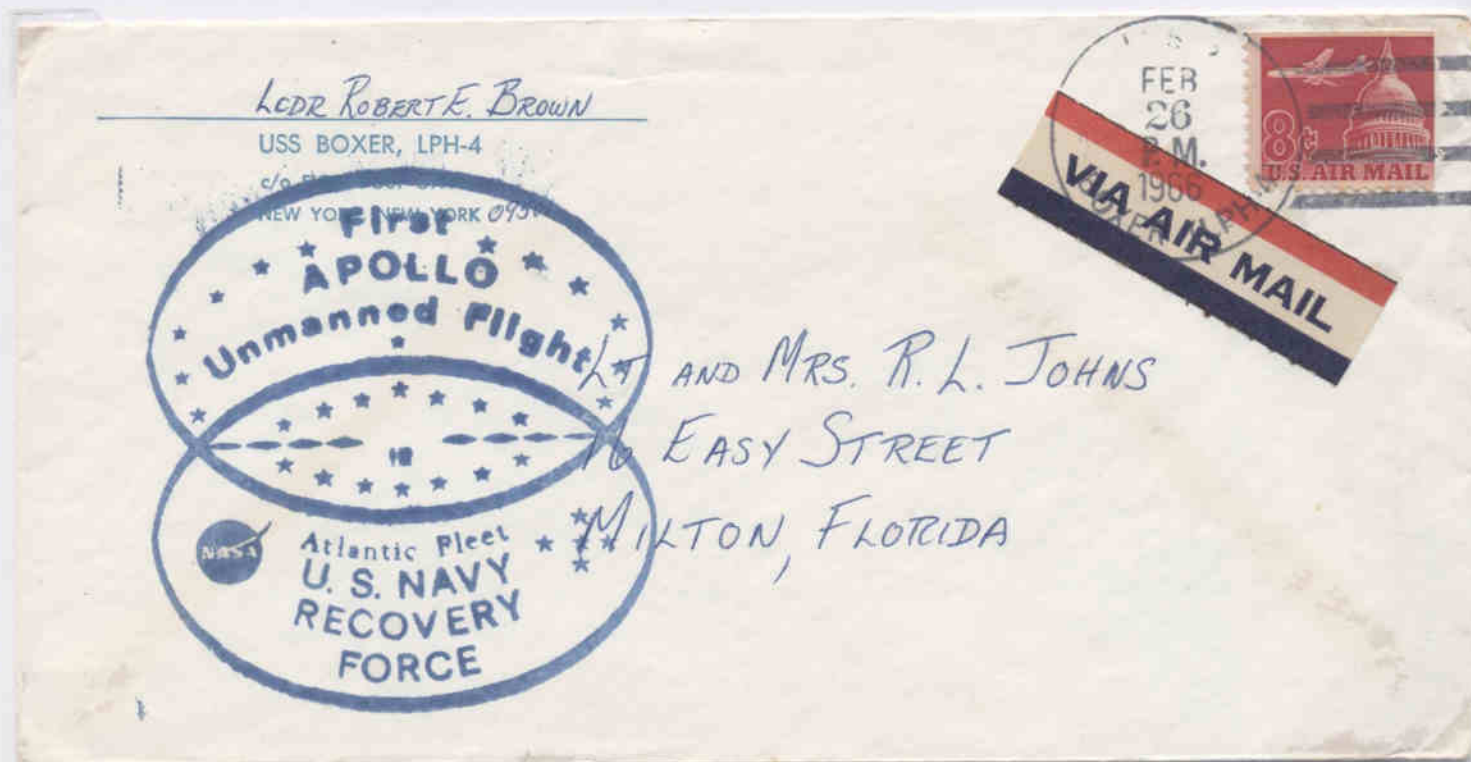


AS-201 (cont'd). While Magenta was the predominate NRSC color, the color blue was occasionally used. The Kennedy stamp was used in homage to the President that set the goal of landing a man on the moon with this start of the Apollo program.

PROJECT APOLLO
Recovered Boilerplates.



AS-201 Unmanned (cont'd). While the blue NRSC was seldom used, it is almost always seen with a Machine Cancel.



AS-201 (cont'd) This envelope, posted by the Lt. Commander of the USS Boxer to friends on Crew Stationery, is somewhat unique in having both the seldom seen blue NRSC and the Hand Cancel. An Air Mail etiquette was tied to the cover under the US Air Mail stamp.



PROJECT APOLLO Recovered Boilerplates.

AS-202 (aka Apollo 3) unmanned. Morris Beck originally printed "AS-203" on his two Beck cachets: B673 and B674. He then overprinted his cachets by blocking out the AS-203 and adding AS 202.

MRS HANS PETERSEN
44 BRUNSWICK AVE
METUCHEN N J 08840

B674

AS-202 (2nd flight of the Saturn 1). Magenta was the Only NRSC color. MC were used almost exclusively. Beck made new cachet rubber stamps rather than trying to fix them.



AS-202 (Apollo 3 Unmanned) Very seldom seen HC for this event.

PROJECT APOLLO
Recovered Boilerplates

AS-501(aka Apollo 6 Unmanned) First test flight of the Saturn 5 rocket that would take men to the moon. Four Beck numbers were used and B727 & B 729 both received MCs.



P

B727



*Hugh M. Blackard
P. O. Box 118
Crockett, Calif. 94525*



B728



AS-501 (cont'd)
Beck B728 and
B730 all received
Hand Cancels.

JOHN H. ROSCHKE
184 Sumpter Street
Brooklyn, New York 11233

AS-501 (cont'd)
The vast majority of
the NRSC were
in Magenta.



UNMANNED APOLLO 4 FLIGHT
PACIFIC RECOVERY FORCE



FRANK M. EDMONDSON
10405 NORTH BOULEVARD
TAMPA, FLA. 33612

PROJECT APOLLO
Recovered Boilerplates.

FAKE



AS-501 (unmanned) Fraudulent cancel on postal stationery. This is another prisoner created cancel and cachet. Obvious are the four thin killer bars to the left of the die hub. Postage applied doubled the then domestic rate of 10c.



AS -502 (aka Apollo 6) unmanned. Beck cachets B747 and B746 were used on this second test flight of the 36 story tall Apollo 5 rocket. Only Hand Cancels were applied to all covers for this flight.



PROJECT APOLLO Recovered Boilerplates.

AS-502 (cont'd)
The PRS was
stationed in the
Pacific where only
Magenta NRSCs
were applied.

AS-502 (cont'd)
Secondary Recovery
Ships were stationed
in the Atlantic where
only black cachets
were used. This PRS
cover had the word
"Pacific" placed on
a label to block out
the word "Atlantic".



HENRY J. KUNDER
1221 Janaf Place
Norfolk, Va. 23502
U. S. A.

APOLLO 6 RECOVERY



W.T.S. WOOD
521 FAIRDALE
FRIENDSWOOD, TEXAS
77546

AS-502 (cont'd)
An example of
this ship's cachet
created for use on
the Okinawa for
all occasions. It is
the least seen
cachet for this
mission.

PROJECT APOLLO
Manned Missions



B758



R.D. Ekas
Box 146
Chicora, Pa.
16025 U.S.A.

Apollo 7 (AS205) (Schirra, Cunningham and Eisele) First manned flight of the Saturn 1 into Earth orbit. The PRS, USS Essex, had four Beck numbers assigned: B758, B760, B761, and B762.

10



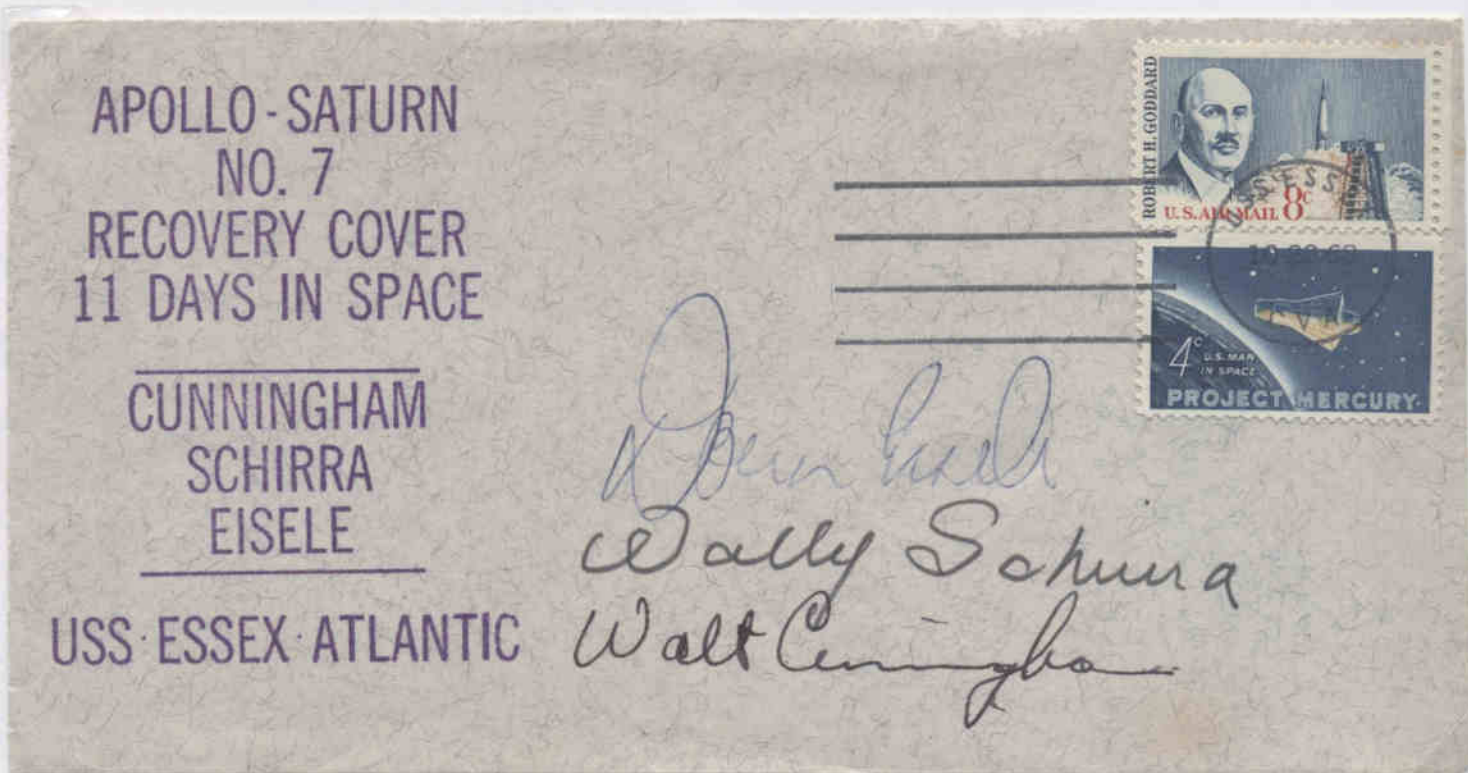
Walt Cunningham

Apollo 7 (cont'd) While Magenta was the predominant NRSC, black and blue were used in small degree. There were no Machine Cancels. (Remember this cachet when viewing Apollo 9)



Apollo 7 (cont'd) This is the most difficult to find NRSC in blue. The Apollo 7 flight was in Earth orbit to test the Apollo rocket and capsule so that difficulties could be taken care of nearby.

F
A
K
E

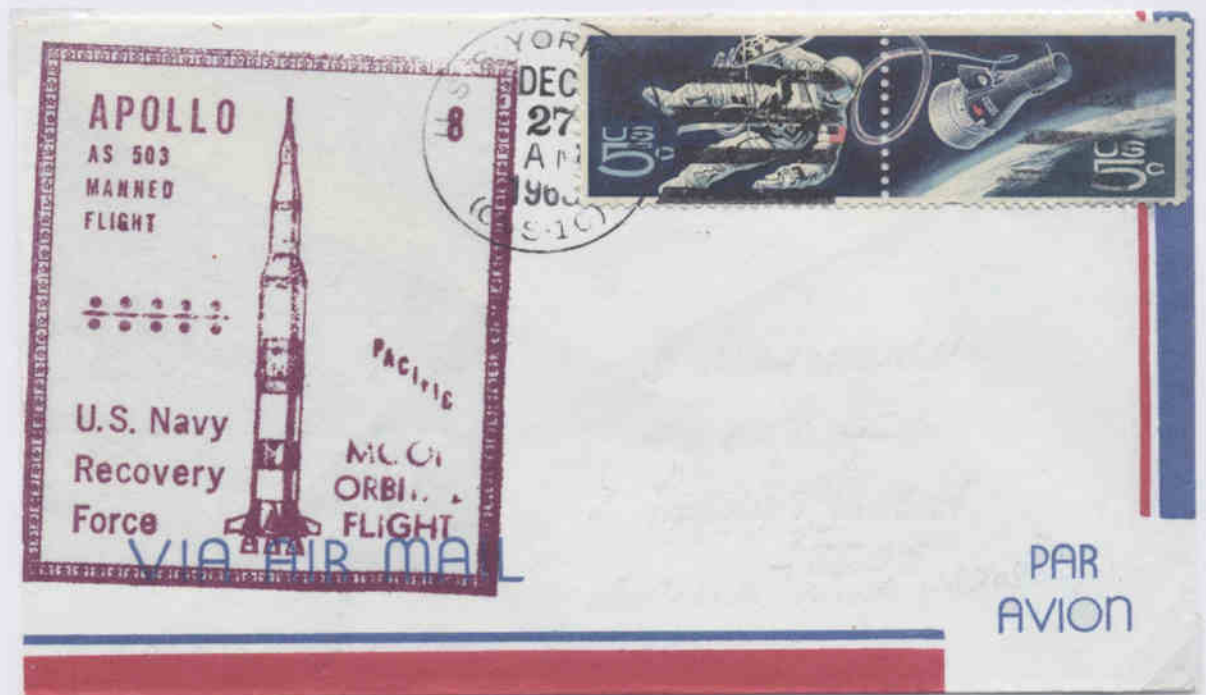


Apollo 7 (cont'd). Another fake by the same prisoner as shown earlier, but with legitimate crew signatures obtained by a now-deceased Space Unit member. Again, he placed the too narrow killer bars on the wrong side of the hub.

PROJECT APOLLO Manned missions



Apollo 8 (aka AS 503) (Borman, Lovell & Anders) This was the first flight to the moon by man. *It did not land but followed a figure 8 path to the moon and returned after orbiting the sphere. This was the exact same trajectory as envisioned by Jules Verne for a flight a century earlier. The USS Yorktown recovered the Apollo 8 in the Pacific. Verne's crew was also recovered in the Pacific, by the USS Susquehanna. There were two Beck cachets: B770 and B77 (495 made). Almost all cancels were done by machine.*



Apollo 8 (cont'd) This is a seldom seen Hand Cancel for this mission. All NRSC were Magenta. 10c was the correct domestic airmail rate.



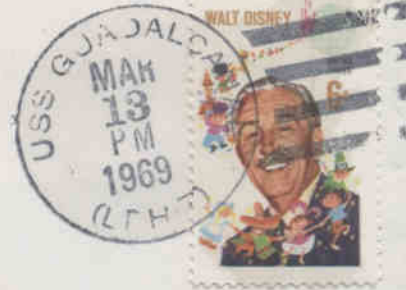
Apollo 9 (aka AS-504) (McDivitt, Scott & Schweikert). Earth orbital mission to test the separation and docking of the Lunar Excursion Module (LEM) to the Command Module (CM) in a near-Earth environment. Two Beck numbers, B782 & B783 were used. *Also two different cancels were used. One had the name of the ship at the top and the other at the bottom. In my book I described these as Type 1 (Top) and Type 2 (Bottom) and that classification has stayed with these cancels. Type 2 is shown here.*



Apollo 9 (cont'd). This is the Type 1 cancel on Air Mail postal stationery with an add-on printed cachet.

PROJECT APOLLO Manned missions

Apollo 9 (cont'd)
Type 1 cancel. The cachet is actually the cachet from the Apollo 7 mission with the "7" cut out. It is speculated that the Postal Clerk enlisted help in processing covers and pulled out this old cachet for the other to use.



EDWIN H. MEYER
3408 N. 83rd ST.
TTS DALE, ARIZONA 85251

Apollo 9 (cont'd)
Same cachet with
A Type 2 cancel



WELCOME TO NORFOLK



J. J. MILEWSKI, Jr.
128 Main Street
East Hartford, Conn.

Apollo 9 (cont'd) This is the actual NRSC for this flight. It is used on the return to port dated cancel.



B787



PETER W. HATCHER
4815 South 31st Street
Arlington, Virginia 22206

Apollo 10 (aka AS 505) (Stafford, Cernan & Young). This is the only Beck numbered cachet used for this mission. The Machine Cancel was the only one used except for possibly five or fewer covers. *This flight orbited the moon in a highly elliptical plane, coming down as low as ten miles from the surface. A computer glitch occurred, tossing the craft around and almost losing the crew before Gene Cernan was able to flick a switch to divert a disaster.*



Three handwritten signatures in black ink.

Apollo 10 (cont'd) About 35 years ago this collector noticed a Hand Cancel for this cover. To the left of it appears a partial Machine Cancel. The clerk evidently noted the missed MC and applied the HC. Since then this collector has seen only one other such cover. Extremely difficult to obtain!



Apollo 10 (cont'd) The only cover used for NRSCs was Magenta. Machine Cancels were used. Only a handful of covers received a Hand Cancel.



Apollo 10 (cont'd) The very difficult to obtain Captain's Cover from the USS Princeton.



NASA MANNED SPACECRAFT CENTER STAMP CLUB
OFFICIAL COMMEMORATIVE COVER
FIRST MANNED LUNAR EXPLORATION



PROJECT APOLLO Manned missions



R C CAMPBELL
3919 PARKMAN DR
COLUMBIA SC 29206

B802

Apollo 11 (aka AS-506) (Armstrong, Aldrin & Collins) The first manned landing on the surface of the moon. There were two Beck cachets: B801, which received only the Type 1 machine cancel as described on the next page, and B802 which received both Types 1 and 2 of the MC along with a HC with 474 printed.. Two hand cancellers were used as shown above. (Note the differences in the "AM").



B802



*Mrs. W. M. Beck Sr.
206 - 2nd St. N.W.
Fort Payne, Ala. 35967*

Apollo 11 (cont'd) This cover received a MC, Type II, on another B802 cover.

PROJECT APOLLO Manned Mission

Drs. Willis & Emily Brown
Optometrists

802 ELGIN TOWER BUILDING
ELGIN, ILLINOIS 60120



ABNORMAL

APOLLO

-11-

AS
506

MANNED
LUNAR
LANDING



U.S. NAVY
RECOVERY
FORCE

PACIFIC



*M. Brown, Dr.
802 Elgin Tower
Elgin, Ill 60120*

Apollo 11 (cont'd)

This is another abnormal cover from Dr. Willis Brown (See Apollo 13). In this case, an Apollo 11 Secondary Recovery Ship, NRSC was applied to the back of this cover and is shown above, about 35% smaller. No SRS NRSCs were aboard the USS Hornet. There is a USS Hornet, Type II Machine cancel on the bottom of this cover, but the HC applied to kill the three Apollo 8 stamps, is different from the two known types of Hand Cancellers used and shown on the previous page.

FAKE

APOLLO ELEVEN

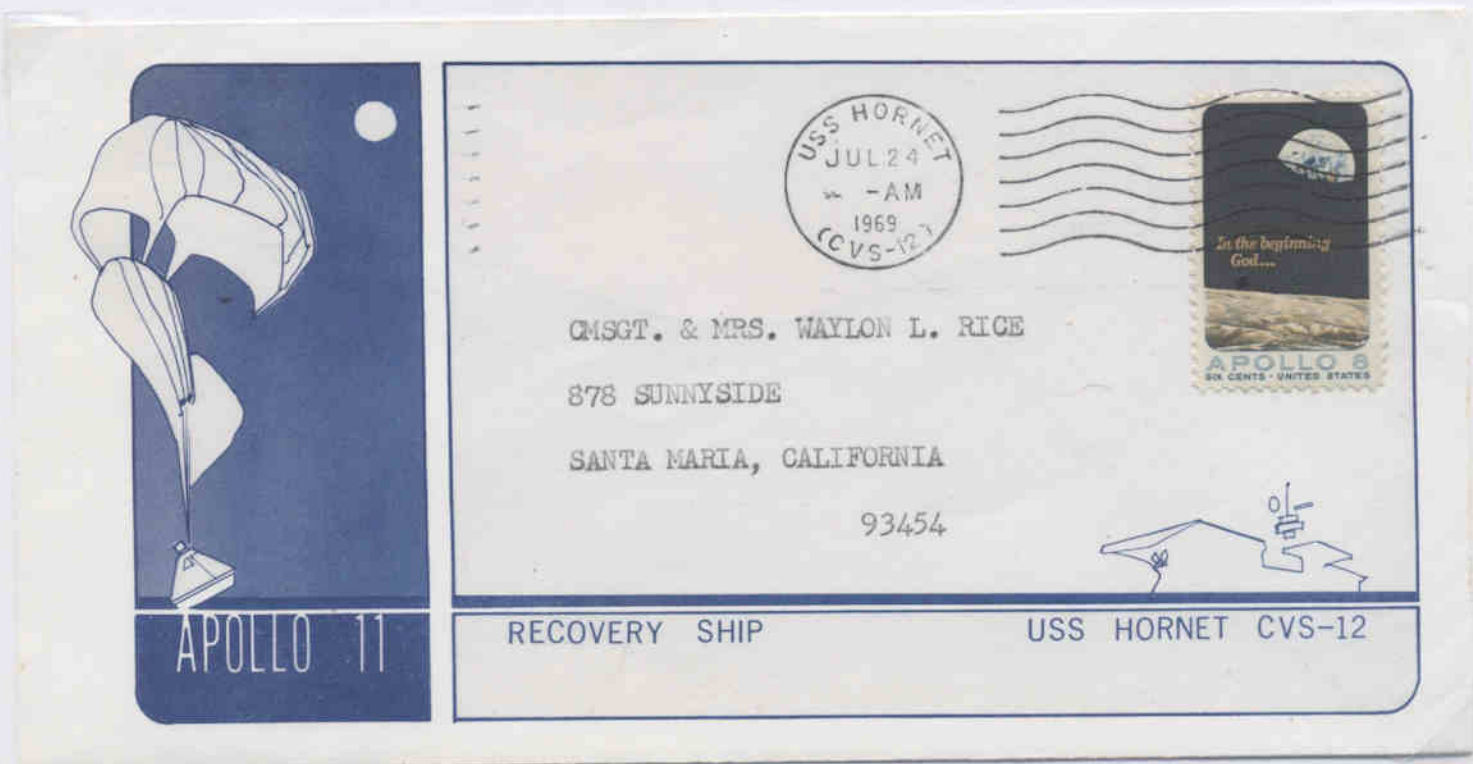
USS HORNET
JUL 20
1969
CVA-12

n. armstrong
e. aldrin jr.
m. collins

JULY 20 1969



Apollo 11 (cont'd). This is an obvious faked cancel.



Apollo 11 (cont'd) Often difficult to obtain Captain's Cover for the Apollo 11 mission. Type 1 Machine Cancel with a hub measuring 23mm and large space between the wavy killer bars.



Apollo 11 (cont'd) Type 2 Machine Cancel with a 21 mm hub and narrow spaces between the wavy killer bars.



B821



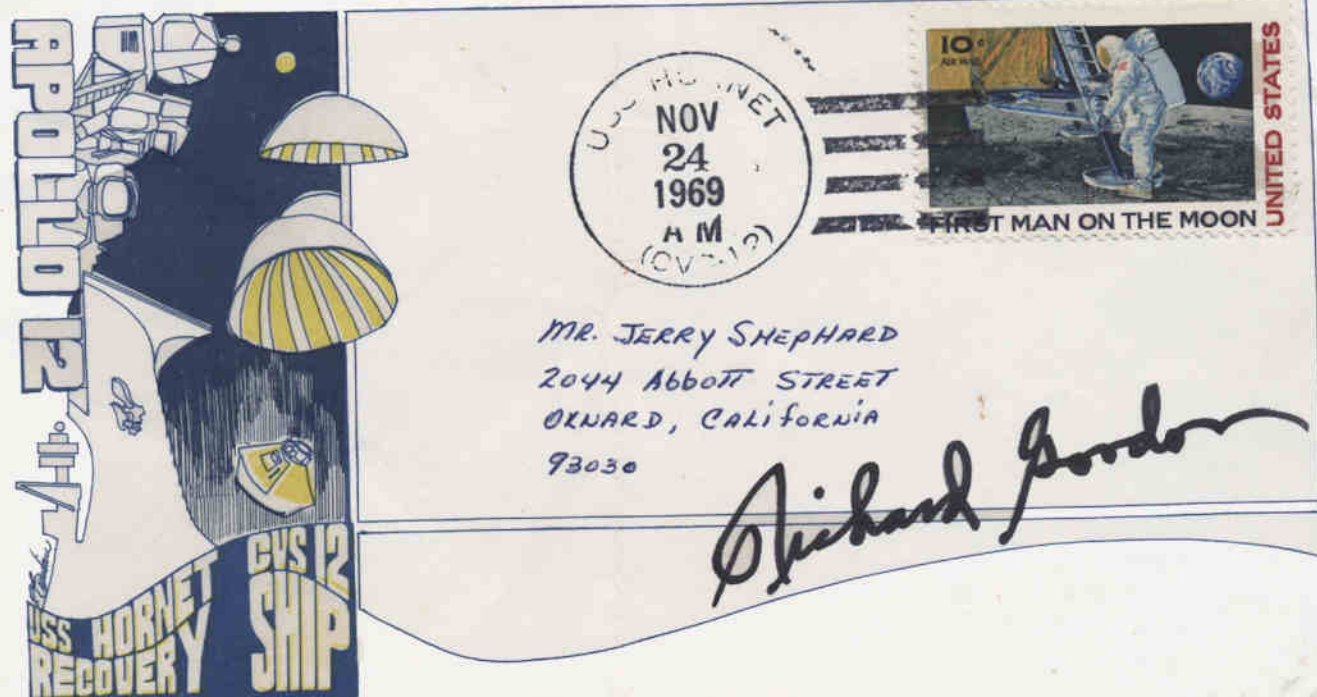
PROJECT APOLLO Manned missions

Apollo 12 (aka AS507) (Conrad, Bean & Gordon). The second manned landing on the moon. Two Beck cachets issued: B821 and B824. Machine cancels are frequently faint as above.



Apollo 12 (cont'd) UPU Article 26 (2) states that cancels applied in International Waters should use stamps of the flag of the vessel. These response cards from Liechtenstein and Switzerland do not comply. These cards were not created for international use. One bears an MC and the other a HC. NRSCs.

PROJECT APOLLO Manned missions



Apollo 12 (cont'd) Captain's Cover for the Apollo 12 mission.



Apollo 12 (cont'd.). What looks like an ordinary *Artopages* printed cachet is not! Note the caption "WECLOME ABOARD". These were created by a US Navy Junior Officer and were sold to crew members aboard the USS Hornet at their Ship's Store. As such they are Crew Covers.

Apollo 12 (cont'd) This is aseldom
seen NASA Recovery Team cover,
printed on board the PRS for use
by the men who returned the
Apollo 12 crew to the Hornet.

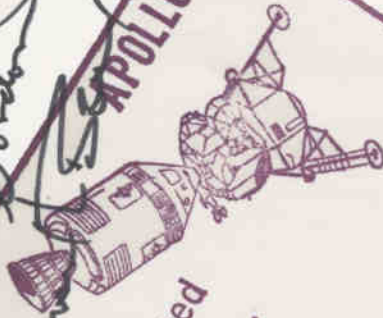
Apollo 12
Second Lunar Landing



NASA

Recovery
Team

APOLLO 12



Manned
Lunar
Landing
PACIFIC

U.S. NAVY
RECOVERY
FORCE



UNITED STATES

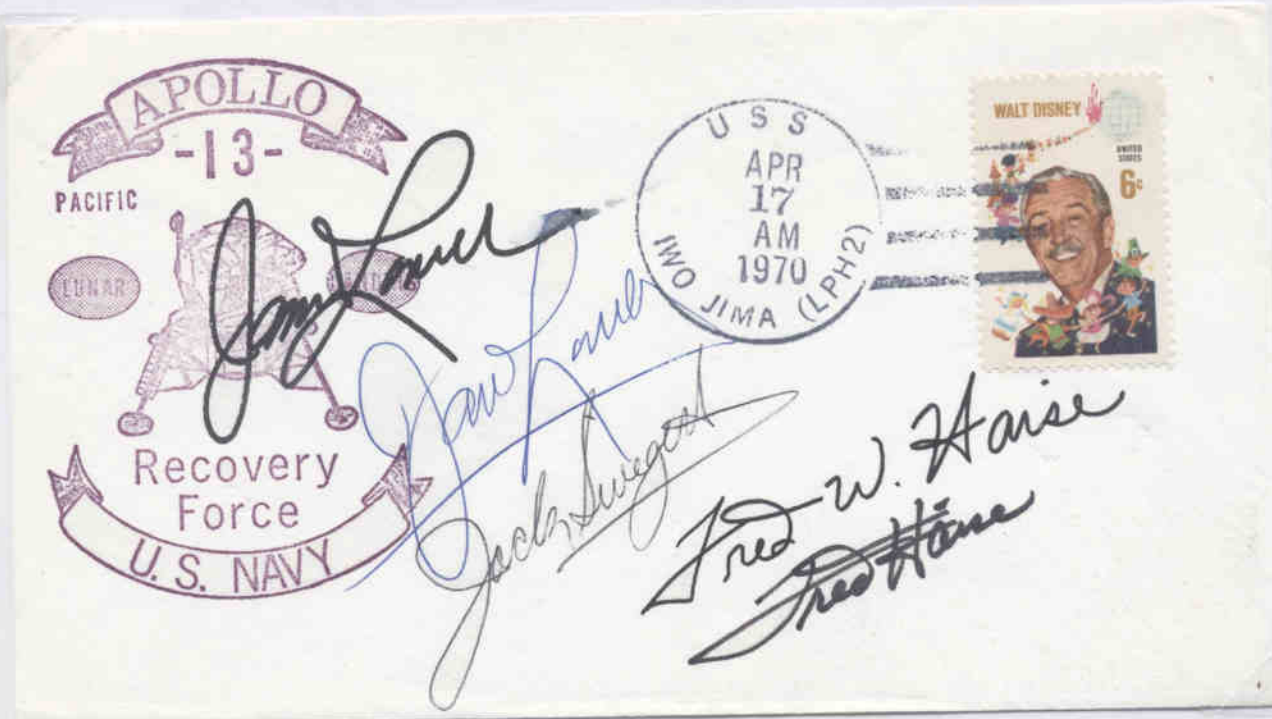
PROJECT APOLLO Manned missions



Apollo 13 (aka AS-508) (Lovell, Haise & Swigert) This moon landing mission was scrubbed on Friday, April 13th after a cryogenic oxygen tank in the Service Module blew up. The only Beck number is B838 and there were two types of HCs used, but no MCs. Type 1 cancel is above with the ship name at the top.



Apollo 13 (cont'd). The Type 2 cancel with the ship name at the bottom was used on this "WELCOME ABOARD" cacheted cover. This and Apollo 12 were the only missions for which this type of cachet was used.



Apollo 13 (cont'd). The only NRS used was magenta as shown here with the Type 2 cancel.

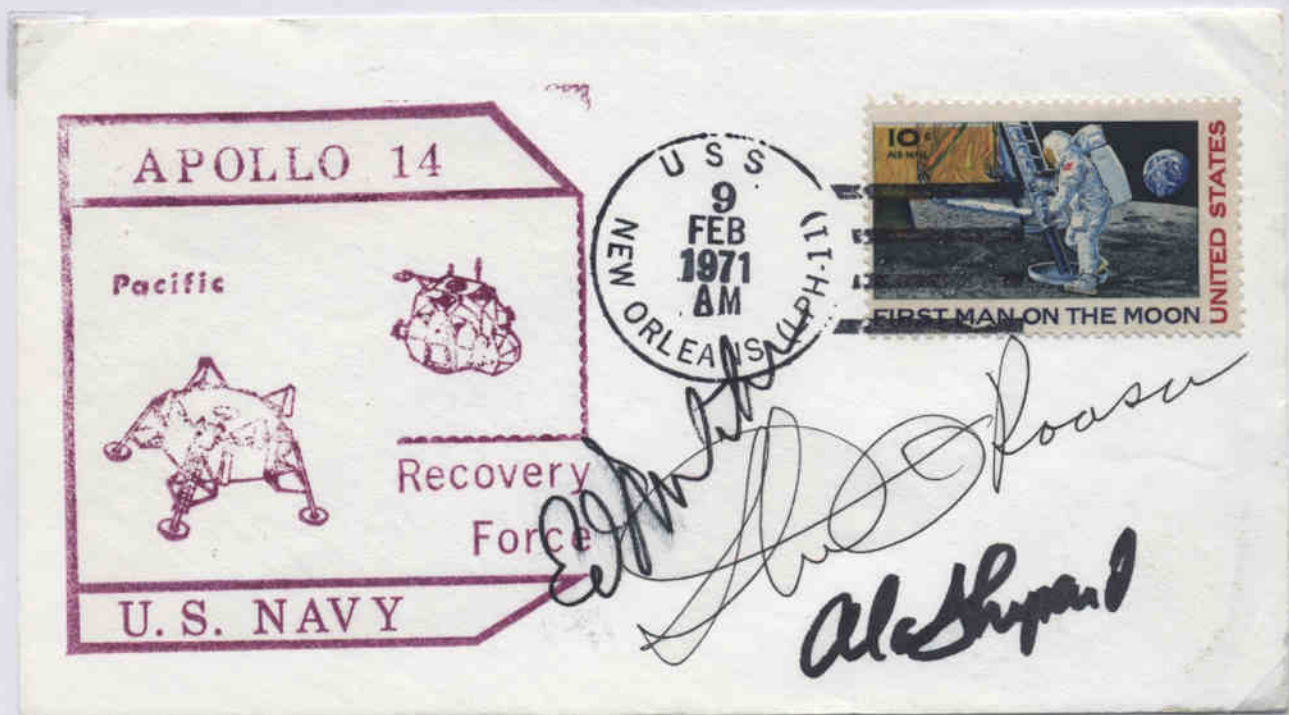
FAKE



Apollo 13 (cont'd) This collector noticed the lack of killer bars on this cancel. It also differed from other known cancels. He showed this to Dr. R. Ramkissoon who knew the deceased Drs. shown on the corner card and did not want to believe that they had faked a cancel. Later other suspicious cancels appeared and Dr. Ramkissoon agreed with this collector that this, and others were faked.



Apollo 14 (aka AS509) (Shepard, Mitchell & Roosa) The third moon landing. There were two Beck numbers: B861 and B864. Only HCs exist and only a Type 2 cancel with the ship's name at the bottom was employed.



Apollo 14 (cont'd). Magenta was the only ink used on the NRSCs.



Apollo 14 (cont'd) Here again is the Magenta NRSC but this cover has an added Kennedy Space Center (KSC) official rubber stamp cachet, which is an official postal marking. These were to have been used only on mail canceled on the date of the Apollo 14 launch. Evidently someone had access to this rubber stamp and used it on this cover, subsequent to splashdown.



Apollo 14 (cont'd) Black HC on a NRSC.

Apollo 14 (cont'd.)

This was written up in an article in the *Astrophile*, the journal of the Space Unit, as the most difficult to find Captain's Cover.



U.S.S. NEW ORLEANS (LPH-11)
PRIMARY RECOVERY SHIP
APOLLO 14

APOLLO 14

Pacific



Recovery
Force

U.S. NAVY



Dr. Foster

Maggie Foster
4814-29th St
Dickinson, Texas 77539



PROJECT APOLLO **Manned missions**

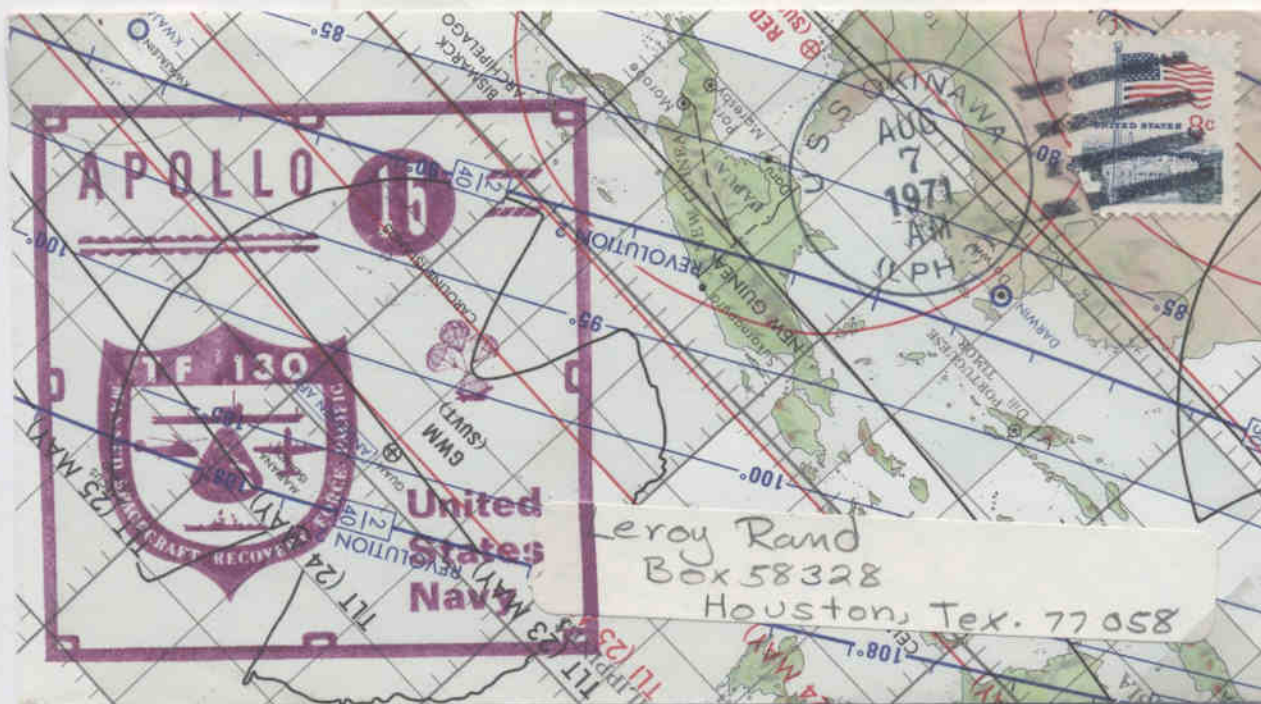
Apollo 15 (aka AS-511) (Scott, Irwin & Worden) Two Beck #s used: B873 & B874. Type 1 cancel shown.



Type 2 cancel shown here with Okinawa at the bottom.

John Lee

B873



Apollo 15 (cont'd.) Map cachets are frequently seen. Each one was hand cut by Eunice Radnofsky of Houston from extra orbital maps brought home by her husband, a NASA engineer. Type 1 cancel with the NRSC in Magenta, the only color used.

PROJECT APOLLO
Manned missions

Apollo 15 (cont'd) Captain's
Cover for this recovery, sent
by a member of the Associated
Press Photo Pool. Type 1 cancel



Mr. Charles Schell
48 Ash Street
Braintree, Mass. 02184



USS OKINAWA LPH-3
APOLLO 15 RECOVERY SHIP

J. WALTER GREEN
ASSOCIATED PRESS
NASA PHOTO POOL

UNIQUE WINGS INSURANCE COVER

Apollo 15 "Wings Insurance Covers" were signed by the astronauts in quarantine prior to their launch to the moon. Until this cover was found by this collector, all cancels were from Houston or Kennedy Space Center. This came from the collection of Astronaut General Jim McDivitt. An inquiry as to how the cover got to the Primary Recovery Ship, to where the newly issued "Decade of Achievement" stamps had been flown by helicopter, and then applied to this cover, he replied, "I don't know how the cover got to the Okinawa, but one of the astronauts gave it to me".

It is known that astronaut Worden bought some of the stamps that were issued on the date of the Apollo 15 lift-off from the moon, to add to covers that had been flown to the moon. Whether this cover was flown to the moon, or was flown, without stamps, to the USS Okinawa, may never be known, but this is the only insurance cover for Apollo 15 known to have been canceled on the Primary Recovery Ship.

The Wing in the lower left corner represents the all Air Force crew. The other, shooting star design is a NASA emblem.

FLOWN TO THE MOON COVER

The Moon, July - August 1971

Dear Friend:

We hope this little souvenir of Apollo 15's journey to the Moon will be a welcome addition to your Memoirs. We made it especially for those who have been close to us all during the long period of preparation. Its all we can do short of taking you along . . . and space wouldn't permit that! Instead, we took this letter along and autographed it on the Moon.

Thanks and regards,

David R. Scott, *Commander*

Alfred M. Worden, *Command Module Pilot*

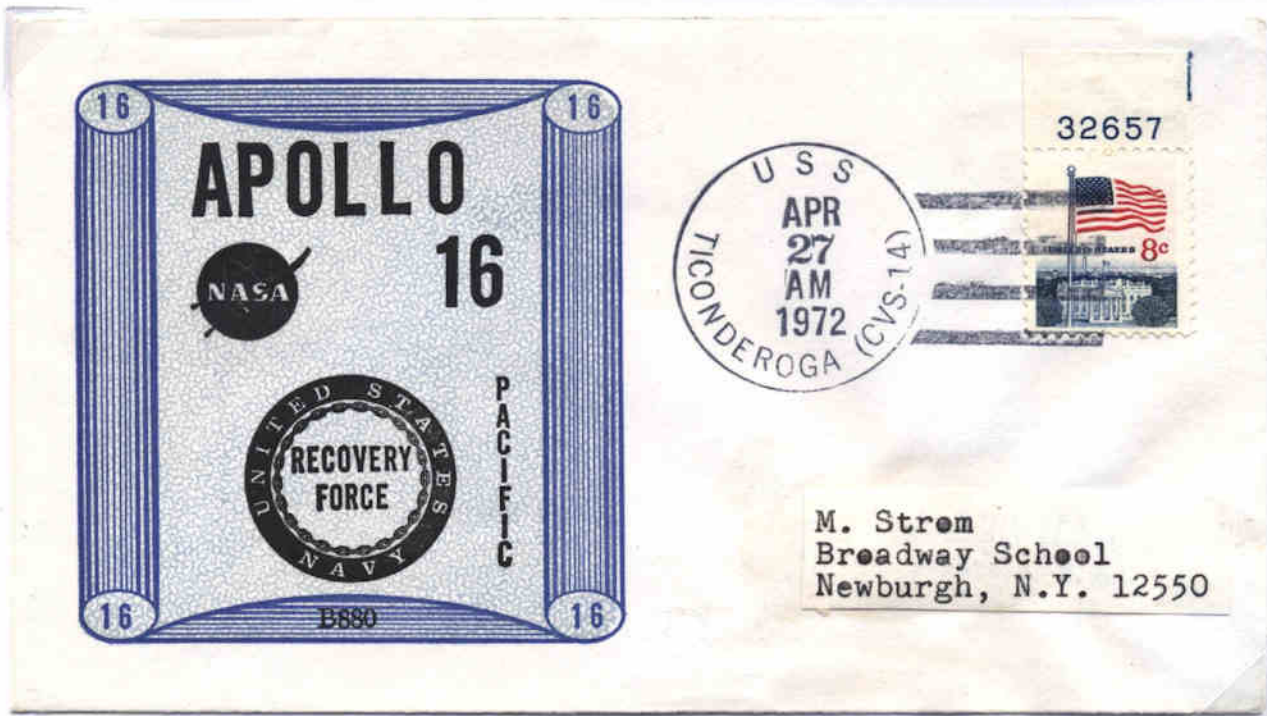
James B. Irwin, *Lunar Module Pilot*



Above: 75% reduction of Rubber Stamp Markings on the back of this cover.

Apollo 15 (cont'd.) This cover with the "Phases of the Moon" cachet, was flown to the moon by astronaut Al Worden as he orbited the sphere. Identical covers that were not flown to the moon were cancelled at Kennedy Space Center for the launch of Apollo 15. The stuffer, shown below the cover, serves as a Certificate of Authenticity. Although the 8c USPS stamp was placed on the cover before launch, 8,000 of the Decade of Achievement stamps, issued on July 2, 1971, were flown by helicopter to the USS Okinawa and 2 were added to this cover while it was on board the PRS, before being cancelled there. This is one of the covers that were confiscated by NASA. The Apollo 15 astronauts had listed the covers in their personal preference kits before launch and carrying them was approved. The crew sued NASA for recovery of the covers and a court ruled in their favor.

Note that covers were carried to the moon on all flights except Apollo 17 but all in smaller numbers.



Apollo 16 (aka AS-512) (Young, Mattingly & Duke). Two Beck numbers exist: B880 and B881. For this mission the US Navy decided that the volume of mail to be canceled was so great that they left the postal clerks at Pearl Harbor, Hawaii, with two hand cancelling devices. The post office on board this, and all later recoveries would be closed and all envelopes would be cancelled in Hawaii. All HCs were with the USS Ticonderoga at the bottom of the hub.



Apollo 16 (cont'd) This is the Magenta NRSC, the only color used on PRS covers.

PROJECT APOLLO Manned missions



Charlie Duke

Apollo 16 (cont'd) As evidenced by a very few covers turning up with the Ticonderoga machine cancel for the day after, and two days after the recovery, usually signed by medical or recovery teams, this collector reasoned that the Machine Cancelling device was left aboard the PRS. The above is one of only three correctly dated covers for the recovery date with a Machine Cancel ever seen by this collector in 45 years.



Apollo 16 (cont'd) Captain's cover for this fifth lunar landing mission's recovery.

COMMANDER IN CHIEF PACIFIC
FLEET POST OFFICE
SAN FRANCISCO 96601



*The American Ambassador
and Mrs. Swank
American Embassy
APO San Francisco 96346*



**It is with great pleasure that I send you
this souvenir envelope commemorating
this historic Apollo mission.**

**JOHN S. McCain, Jr.
Admiral, U. S. Navy**

Apollo 16 (cont'd) First discovered and then named a CINCPAC (Commander In Chief - Pacific) cover by this collector. This is a diplomatic cover sent by Admiral John McCain Sr. to the Ambassador of Cambodia. The APO address is that of the American Embassy in Bangkok, Thailand to where Ambassador Swank moved due to the "Cambodian Incursion". Admiral McCain's son was in a Hanoi prison at the time. Ambassador Swank and Admiral McCain were at odds over Cambodia at this time.



B884



PROJECT APOLLO Manned missions

Apollo 17 (AS-513)
(Cernan, Evans &
Schmitt). The last
Apollo flight
B884 & B885
were used.



Missing
month
variety of
the only
HC used.
NRSCs
were all
Magenta.

*Marn Eckhardt
1502 1/2 W. Short 17th
W. Little Rock, Ark. 72114*

AIR-MAIL

**APOLLO 17 RECOVERY
FLOWN VIA HELICOPTER**

DATE *Dec 19 1972*
FROM *USS Ticonderoga*
TO *CVS-14*
MODEL *SH-3 G*
LIC. *001*
PILOT *COR Paul Deibel*
REMARKS *Recovery Pilot*



Apollo 16 (cont'd)
Flown on the
recovery Helicopter
and canceled aboard
the Ticonderoga with
the on-board MC.
Very difficult to
find.

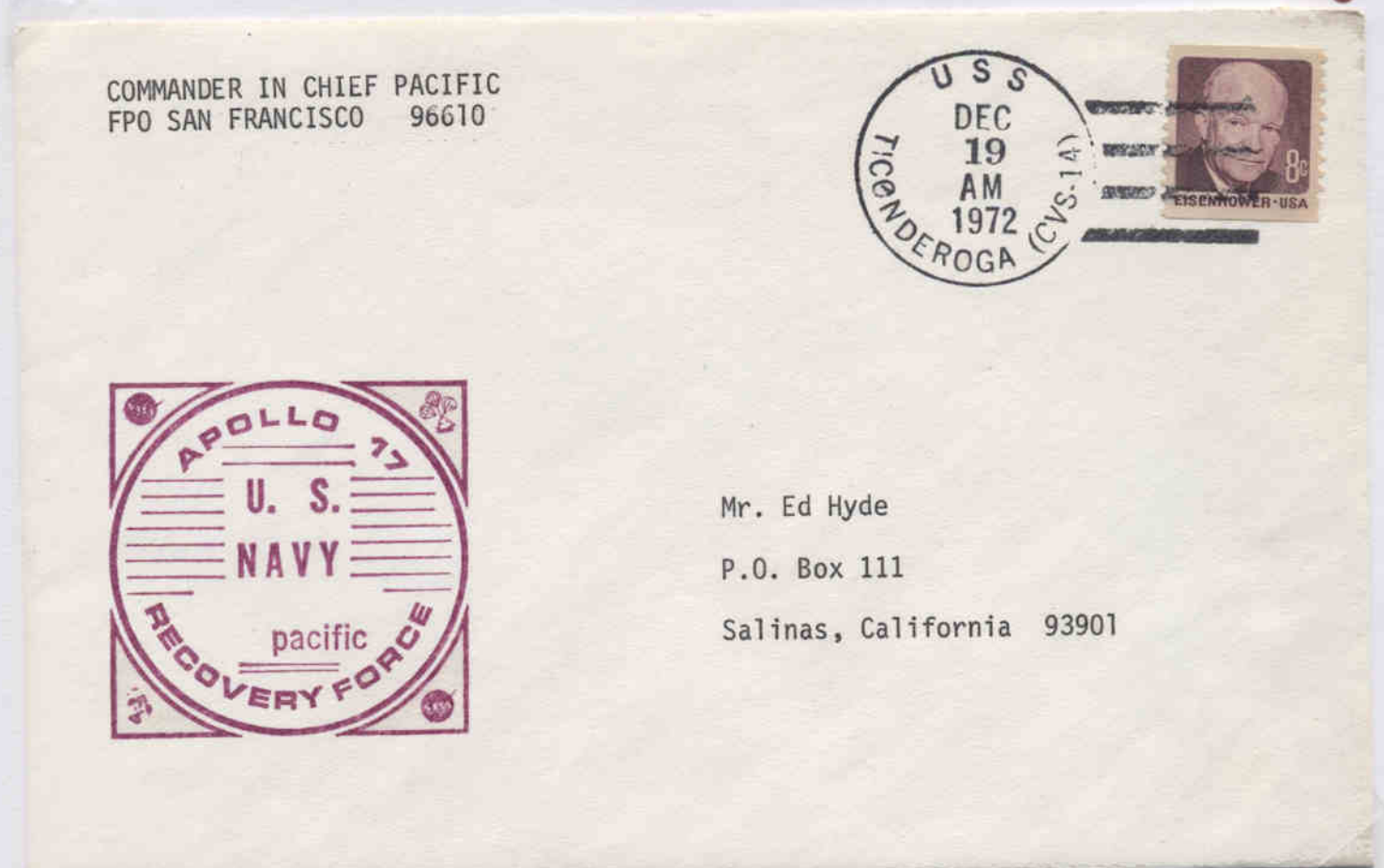
[Signature]

E. Schmidt
54 K O B L E N Z
Hunnenpfad 11
G E R M A N Y

PROJECT APOLLO Manned missions



Apollo 17 (cont'd) Captain's Cover.



Apollo 17 (cont'd) Another CINCPAC cover with insert. This collector is aware of only two other CINCPAC covers in the hands of collectors: Apollo 12, Apollo 15, and Apollo 16 which appears in this exhibit.

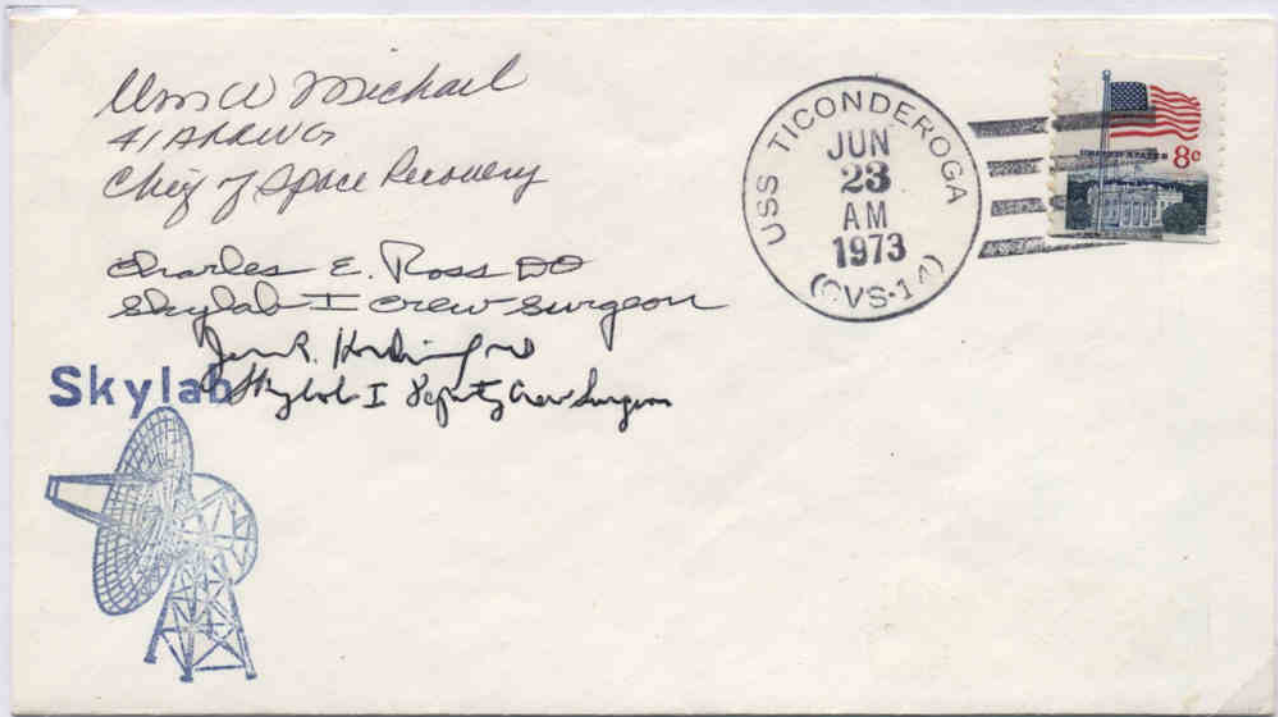


B889

Skylab II (SL2) (aka Skylab 1) (Conrad, Kerwin & Weitz) The two Beck cachets were B888 and B889. Skylab 1 was the unmanned laboratory which was not recovered. News media forgot about that and started calling this first manned flight, Skylab 1, which has caused confusion. Again HC were used. This is a Type 2.



Skylab II (cont'd) There was no postal rate need for using postage due stamps on the NRSC cover and they would not have been counted as postage anyway. An Airmail etiquette was also added. Type 2 cancel.



Skylab 2 (cont'd) Cancelled on the "Day After" recovery and the date when the on board post office reopened, this cover was actually aboard the PRS and is seldom seen. It bears the unusual Type 1 cancel and is signed by many of the medical team members aboard the Ticonderoga.



Skylab 2 (cont'd). A "Day After" machine cancel from the Ticonderoga is again very difficult to find. The signatures appear to be from the recovery team members. This is the only 23 June 1973 Ticonderoga machine cancel ever seen by this collector.



Skylab 3 (aka SL-3/aka Skylab 2) (Bean, Lousma & Garriott) The two Beck numbers used were B892 and B893. 25 September dates with wavy line killer bars were HC in Hawaii.



Skylab 3 (cont'd) Only the Magenta color appears on the NRSCs.



Skylab 3 (aka SL-3) Note that the cachet calls this Skylab II (for the second manned mission) while the Navy Rubber Stamped cachet calls it Skylab II. This cover bears the Corner Card of the USS New Orleans and is a difficult "Day-After" cancel, meaning that it was actually aboard the ship and not cancelled in Hawaii.



Skylab 3 (cont'd) Captain's Cover for this mission with a difficult to obtain "Day-After" cancel.



B897



SKYLAB Manned missions

Skylab 4 (SL-4)
(aka Skylab 3)
(Carr, Gibson, Pogue)

This was the final
Skylab mission.

The two Beck
cachets used were
B896 and B897.

Only Type 2
HCs are known

All NRSCs were
Magenta colored.



Seldom seen PRS
HC with straight-
line killer bars.

Skylab-4-Recovery

Date: 8 Feb 74

Aircraft: SH-3G

No.: 149003/004

Name: Photo

From: U.S.S. New Orleans

Pilot: LTJG Roger D. James

Copilot: LTJG R. D. LeRay

Crew:



W. Bertermann
Fasanenweg 47

D-2 Norderstedt 2
Germany

Skylab 4 (cont'd) FLOWN helicopter recovery cover, cancelled on the "Day-After" and therefore actually aboard the PRS.



Ray Carr
Ed Gibson
Paul Pogue



REUBEN A. RAMKISSOON, M. D.
P. O. BOX 122
EL TORO, CALIFORNIA 92630

Skylab 4 (cont'd) Captain's Cover mailed by Dr. R. Ramkissooon who had been selected to be aboard as a part of the Press Pool for both Skylab 3 and 4.

APOLLO SOYUZ TEST PROJECT (ASTP) – Manned Flight



ASTP (Stafford, Slayton & Brand) Only one Beck number was used: B998) For some reason the Navy decided that no covers would bear the name of the recovery ship; the USS New Orleans, and all submitted envelopes were cancelled with a San Francisco, CA pictorial machine cancellation on the date of the recovery.



ASTP (cont'd). This was the last ocean landing of a United States manned space mission. Deke Slayton, the only Project Mercury astronaut who had not flown, was placed on this mission. This NRSC is not seen often as most covers were returned without a cachet.



ASTP (cont'd) Even covers submitted for being carried by recovery teams were returned with the San Francisco cancel and unflown. It is unknown how this received the on board standard ship's cachet rubber stamp.



ASTP (cont'd) Somehow, cover servicer Robert Boudwin was able to have covers cancelled aboard the USS New Orleans on the "Day-After" recovery.



ASTP (cont'd) Mr. Boudwin was also able to get a small quantity of his own cacheted covers cancelled aboard the PRS on the date of recovery. This ASTP stamp was issued on the date of the launch of the ASTP.



ASTP (cont'd). All other cancels shown for the ASTP were the Type 2 variety with wavy line killer bars. This, "Return to Port" dated cover bears the Type 1 variety with the ship's Rubber Stamp Cachet and the stamped name of the Postal Clerk. With this return to port, manned recoveries at sea was completed.